

HEART OF AMERICA
CARNIVAL GLASS ASSOCIATION CONVENTION

Carnival Glass

2015 AUCTION

Saturday, April 25, 9:30 a.m.

Embassy Suites Airport Hotel
Kansas City, Missouri

**The Bud Martin
Collection**



JIM & JAN SEECK

Seeck Auctions

641-424-1116

To view the complete auction, check our website at: www.seeckauction.com

JIM & JAN SEECK

CARNIVAL GLASS AUCTION

641-424-1116

Saturday, April 25, 2015 — 9:30 AM

Embassy Suites International Airport Hotel

7640 NW Tiffany Springs Parkway Kansas City, Missouri

NO BUYER'S PREMIUM — OPEN TO THE PUBLIC

ABSENTEE BIDDING is available on-line through Auction Flex
using our online catalog at www.seeckauction.com

★ **Online absentee bidding closes Fri., April 24 at 9 p.m. CST**

Please email us and we will put you on our email mailing list for auction notices.
e-mail: jimjan@seeckauction.com

The Bud Martin Collection

Fantastic Northwood glass! That is what Bud Martin from Arkansas collected for many years. Bud and his wife traveled to many of the conventions and auctions to find and purchase their glass. A favorite pattern of Buds was Stippled Strawberry and as you look through his catalog, you will see several only known Strawberry pieces plus just a wonderful array of rare and beautiful glass! Once again, the HOACGA convention and auction will be one not to miss!

LODGING: Reservations can be made by calling the hotel directly at 816-891-7788. Ask for reservations and mention the HOACGA Convention. If you have a problem or questions about reservations at the hotel or questions about the convention, please call Bob Grissom at: 816-356-5320. ITEXAS CLUB CONVENTION INFO:

Visit the Heart of America Carnival Glass Association website at www.hoacga.com

Terms: Cash or Check, VISA, MasterCard & Discover accepted w/proper ID. 4% Clerking Fee on all purchases made using credit cards. Announcements made day of sale take precedence over any printed information.

We have 3 options for absentee bidding for our live auctions:

- 1) If you DO NOT have internet access, you can:** Call us by phone to enter your bids at (641)424-1116 OR by sending the numbers of the item(s) desired and the amount bid on each to: Seeck Auctions, PO Box 377, Mason City, Iowa 50402. We would prefer you call us with your bids rather than send them in a letter.) We will enter your bids into our online bidding system.
★ Have all written bids in by **Wed., April 22.**
- 2) Enter your bids from our website into our online catalog through the Auction Flex system.**
 - ◆ **First-time bidders: Set up your account** by creating a user name and password and filling out basic information. You will also need to **register for the auction** which will ask you to enter a valid credit card number. This card will be validated by a one time only charge of \$1 charge to your card. **You will use this user name and password for all our auctions.**
 - ◆ You are not required to pay by credit card if you are successful with your online bid. We will let you know what you owe us through an email and you can decide how you would like to pay us.
 - ◆ An exciting advantage to online bidding is that you can be notified by email if you are outbid on an item, which lets you increase your bid in time, or bid on something else. **There is a cutoff date and time, for each auction, for entering your bids online.** ★ **Online absentee bidding for this auction closes Friday, April 24 at 9 p.m. CST.**
 - ◆ Remember that just because you are the high bidder in the online catalog, this does not mean you have won the item. Your bid still needs to **beat** the floor bidders and live phone bidders. If your high bid lands with a floor bidder during the live auction, the floor bidder takes precedence. You might want to bid higher on a highly desired item for a better chance at winning its absentee bid.
 - ◆ If you do not receive an item that sold for less than your bid, assume we canceled your bid because the item had a severe manufacture problem, damage, or was not listed correctly.
- 3) Live phone bidding is available on pieces with an estimated sale price of \$500 or more.** ★ Contact us by the **Thursday before the auction, which is April 23** We will need to know the lot# and the phone number that you can be reached at on the day of the auction. We also need your home phone number if different than the above number.

Please call with questions: 641-424-1116.

If you win an online bid you will be notified by phone or e-mail between one to three days after the auction.

There is a \$7 handling charge for each successful bid, with shipping and insurance charges additional.

ONLINE BID INCREMENTS: \$1 - \$100/\$5 \$100 - \$200/\$10 \$200 - \$700/\$25 \$700 - \$1,500/\$50
\$1,500 - \$3,000/\$100 \$3,000 - \$5,000/\$250 \$5,000+ Auctioneer's Discretion

- 525 1. Scroll Embossed small size ruffled compote - violet blue - rare color, very pretty
- 170 2. Scroll Embossed small size ruffled compote - purple - nice
- 300 3. Scroll Embossed small size ruffled compote - amber - nice
- 215 4. Beaded Bullseye 12" vase - purple - super
- 11,500 5. STIPPLED STRAWBERRY 9" PLATE W/RIBBED BACK - ICE GREEN - A FANTASTIC RARITY, ONLY ONE I KNOW OF, A BEAUTY!
- 17,000 6. STIPPLED STRAWBERRY 9" PLATE W/RIBBED BACK - WHITE - ALSO AN ABSOLUTE BEAUTY, ONLY ONE I KNOW OF, GREAT CHANCE TO BUY GREAT THINGS!
- 13,000 7. STIPPLED STRAWBERRY 9" PLATE W/RIBBED BACK - ICE BLUE - BUD HAS BEEN KNOWN FOR THE BEST STIPPLED STRAWBERRY COLLECTION IN THE COUNTRY AND HERE IS ANOTHER!
- 800 8. Stippled Strawberry 9" plate w/ribbed back - green - almost radium, a dandy
- 150 9. Stippled Strawberry 9" plate w/ribbed back - purple - scarce, chip on base
- 1000 10. Stippled Strawberry 9" plate w/ribbed back - marigold - radium type irid., dark & pretty
- 1400 11. Grape & Cable mid-size 8 pc. punch set - green - very hard to find in this size, pretty
- 550 12. Wishbone & Spades 6" plate - purple - super!
- 3000 13. PEACOCKS RUFFLED BOWL W/RIBBED BACK - LIME GREEN OPAL - SUPER RARE BOWL & SUPER PRETTY, MOST OF THESE ARE FILLED WITH BUBBLES, THIS ONE IS NOT
- 3200 14. PEACOCKS RUFFLED BOWL W/RIBBED BACK - POWDER BLUE OPAL - EXTREMELY RARE COLOR, VERY PRETTY
- 450 15. Peacocks ruffled bowl w/ribbed back - aqua opal - pastel & super, nice opal
- 600 16. Peacocks ruffled bowl w/ribbed back - aqua opal - butterscotch & very nice
- 400 17. Peacocks ruffled bowl w/ribbed back - ice blue - very scarce, nice
- 375 18. Peacocks ruffled bowl w/ribbed back - ice green - pretty
- 250 19. Peacocks ruffled bowl w/ribbed back - white - also very pretty
- 525 20. Peacocks ruffled bowl w/ribbed back - aqua - extremely hard color to find, super pretty with butterscotch irid.
- 400 21. Peacocks ruffled bowl w/ribbed back - lavender - very nice
- 375 22. Peacocks ruffled bowl w/ribbed back - marigold - lots of pretty pink
- 1050 23. Stippled Grape & Cable bonbon - aqua - very pretty, rare color! *
- 1000 24. Enameled Iris w/diagonal band 6 pc. water set - amethyst - super nice
- 375 25. Enameled Iris w/diagonal band 5 pc. water set - marigold
- 800 26. GOOD LUCK 9" PLATE W/RIBBED BACK - ICE GREEN - VERY, VERY RARE & SUPER PRETTY
- 4500 27. GOOD LUCK 9" PLATE W/RIBBED BACK - WHITE - SUPER IRID., VERY RARE PLATE, GREAT OPPORTUNITY!
- 5000 28. GOOD LUCK 9" PLATE W/RIBBED BACK - ICE BLUE - SUPER FANTASTIC, SUPER RARE!
- 525 29. Good Luck 9" plate w/ribbed back - marigold - dark & beautiful
- 950 30. Hyacinth Gone with the Wind lamp - marigold - very rare lamp & nice
- 2900 31. Rose Show ruffled bowl - lime green opal - very rare bowl & a beauty
- 2700 32. Rose Show ruffled bowl - sapphire - super neat bowl, rare & beautiful, from the Morgan collection
- 800 33. Rose Show ruffled bowl - horehound - very rare color & very pretty
- 300 34. Rose Show ruffled bowl - aqua - another rare & beautiful bowl
- 425 35. Rose Show ruffled bowl - aqua opal - pastel, nice
- 475 36. Rose Show ruffled bowl - aqua opal - heavy butterscotch, very pretty
- 800 37. Rose Show ruffled bowl - lime green - another very rare color for these, pretty
- 450 38. Rose Show ruffled bowl - ice green - scarce
- 126 39. Rose Show ruffled bowl - white - pretty irid.
- 1300 40. Rose Show ruffled bowl - green - a beauty, tough color
- 450 41. Rose Show ruffled bowl - blue - electric highlights
- 300 42. Rose Show ruffled bowl - purple - very nice
- 250 43. Rose Show ruffled bowl - marigold - dark, nice
- 1300 44. Memphis 8 pc. punch set - white - very rare set, highly desirable
- 4250 45. STIPPLED THREE FRUITS 9" PLATE W/RIBBED BACK - ICE BLUE - EXTREMELY RARE COLOR & SUPER NICE
- 1000 46. Stippled Three Fruits 9" plate w/ribbed back - horehound - very, very rare color, nice
- 1000 47. Stippled Three Fruits 9" plate w/ribbed back - aqua opal - very scarce, nice
- 1000 48. Stippled Three Fruits 9" plate w/ribbed back - aqua opal - opal only on tips, nice look
- 2300 49. Stippled Three Fruits 9" plate w/ribbed back - aqua - hard to find color w/super irid.
- 275 50. Stippled Three Fruits 9" plate w/ribbed back - sapphire - rare color, minor scratches on fruit
- 225 51. Stippled Three Fruits 9" plate w/ribbed back - blue - very nice
- 450 52. Stippled Three Fruits 9" plate w/ribbed back - purple - has electric blue irid., pretty
- 375 53. Stippled Three Fruits 9" plate w/ribbed back - lavender
- 130 54. Stippled Three Fruits 9" plate w/ribbed back - marigold - dark, super, slight rubbing on the fruit
- 135 55. Stippled Three Fruits 9" plate w/ribbed back - marigold - more towards the pastel side, pretty
- 475 56. Acorn Burrs 7 pc. water set - green - scarce set, pitcher is very nice
- 525 57. Acorn Burrs 7 pc. water set - purple - scarce set, very pretty
- 725 58. Hearts & Flowers PCE bowl w/ribbed back - lime green - super pretty w/great irid.
- 200 59. Hearts & Flowers PCE bowl w/ribbed back - white - scarce color, nice
- 575 60. Hearts & Flowers PCE bowl w/ribbed back - green - a beautiful one
- 275 61. Hearts & Flowers PCE bowl w/ribbed back - purple - very nice
- 300 62. Hearts & Flowers PCE bowl w/ribbed back - marigold - dark, pretty
- 550 63. Grape & Cable cracker jar - ice green - very minor pinpoint of inner edge of base, very rare & pretty piece
- 275 64. Grape & Cable cracker jar - purple
- 225 65. Stippled Grape & Cable cracker jar - marigold

- 1000 66. Poppy Show ruffled bowl - green - rare color, pretty
- 325 67. Poppy Show ruffled bowl - ice green - very scarce color
- 225 68. Poppy Show ruffled bowl - ice blue - light on irid.
- 300 69. Poppy Show ruffled bowl - marigold - dark, nice
- 140 70. Fruits & Flowers bonbon - ice green - very nice
- 225 71. Fruits & Flowers bonbon - ice blue - also nice
- 155 72. Fruits & Flowers bonbon - white - pretty irid.
- 325 73. Fruits & Flowers bonbon - aqua opal - great example
- 70 74. Fruits & Flowers bonbon - purple - pretty
- 1100 75. Stippled Grape & Cable Variant 9" plate w/ ribbed back - sapphire - super pretty, very rare
- 700 76. Stippled Grape & Cable Variant 9" plate w/ribbed back - green - very pretty, some would call this emerald
- 300 77. Stippled Grape & Cable Variant 9" plate w/ribbed back - marigold - very scarce color, pretty
- 155 78. Stippled Grape & Cable Variant 9" plate w/ribbed back - purple - scarce
- 225 79. Old Rose Distillery/Stippled Grape & Cable Variant 9" plate w/ribbed back - green - always desirable
- 775 80. Peach 5 pc. water set - blue - scarce, nice
- 525 81. Poinsettia & Lattice ftd ruffled bowl - ice blue - scarce
- 130 82. Poinsettia & Lattice ftd ruffled bowl - purple
- 90 83. Poinsettia & Lattice ftd ruffled bowl - blue opal - not Carnival Glass
- 1000 84. Stippled Grape & Cable small size 8 pc. punch set - blue - super pretty set, very, very rare
- 425 85. Nippon PCE bowl w/ribbed back - ice green - rare, pretty
- 75 86. Nippon PCE bowl w/ribbed back - white - nice
- 190 87. Nippon PCE bowl w/BW back - ice blue - dark, pretty
- 180 88. Nippon PCE bowl w/BW back - white - pretty
- 425 89. Peacock at the Fountain ruffled compote - ice green - scarce, very nice
- 350 90. Peacock at the Fountain ruffled compote - ice blue - nice
- 130 91. Peacock at the Fountain ruffled compote - white - scarce, nice
- 325 92. Peacock at the Fountain ruffled compote - blue - scarce
- 525 93. Peacock at the Fountain ruffled compote - purple - scarce, pretty
- 350 94. Wishbone ftd ruffled bowl - ice blue - scarce, nice
- 50 95. Wishbone ftd ruffled bowl - marigold
- 450 96. Grape & Cable banana boat - ice green - scarce, nice irid.
- 375 97. Grape & Cable banana boat - green - nice, hard color to find
- 225 98. Stippled & Banded Grape & Cable banana boat - marigold - dark color w/pretty irid.
- 1000 99. N's Peacock at Urn master IC bowl - green - super rare color, nice, not often sold
- 375 100. N's Peacock at Urn master IC bowl - ice green - pretty, scarce
- 375 101. N's Peacock at Urn master IC bowl - ice blue - pretty irid.
- 150 102. N's Peacock at Urn IC sauce - ice blue - nice
- 160 103. N's Peacock at Urn master IC bowl - white - nice
- 55 104. N's Peacock at Urn IC sauce - white
- 320 105. N's Peacock at Urn master IC bowl - purple - has electric highlights
- 60 106. N's Peacock at Urn IC sauce - purple
- 170 107. N's Peacock at Urn master IC bowl - marigold - dark, nice
- 45 108. N's Peacock at Urn IC sauce - marigold
- 75 109. N's Peacock at Urn IC sauce - blue
- 1500 110. Acorn Burrs 8 pc. punch set - white - super rare w/pretty irid., top of base has minor pinpoint
- 850 111. Acorn Burrs 8 pc. punch set - green - scarce set, highly desirable
- 800 112. Acorn Burrs 8 pc. punch set - marigold - dark & super pretty w/lots of pink & blue highlights - one cup cracked
- 500 113. Acorn Burrs punch bowl & base w/1 cup - purple - pretty bowl, crack & repaired base
- 2000 114. Acorn Burrs 8 pc. punch set - ice blue - extremely rare set, base has burst on top edge, bowl has repaired point
- 1100 115. Acorn Burrs 8 pc. punch set - ice green - bowl has been restored
- 190 116. M'burg Strawberry Wreath ruffled compote - green - radium & nice, only a couple pieces of Millersburg in the sale!
- 275 117. M'burg Strawberry Wreath ruffled compote - amethyst - radium & nice
- 400 118. Grape & Cable cologne bottle - green - nice
- 130 119. Grape & Cable cologne bottle - purple
- 400 120. Grape & Cable cologne bottle - marigold - nice
- 300 121. Grape & Cable cvd compote - purple - nice
- 225 122. Springtime butter dish - green - very scarce, nice
- 140 123. Stag & Holly lg size IC shaped ftd bowl - marigold
- 18,000 124. STIPPLED STRAWBERRY RUFFLED BOWL W/BW BACK - ICE BLUE - ONLY ONE I KNOW OF WITH THE BASKETWEAVE BACK, SUPER PRETTY, WOW!
- 5000 125. STIPPLED STRAWBERRY RUFFLED BOWL W/BW BACK - WHITE - THIS IS GORGEOUS! THIS IS THE ONLY WHITE BOWL I KNOW OF
- 350 126. Stippled Strawberry ruffled bowl w/BW back - horehound - super beautiful, rare color
- 375 127. N's Corn vase w/stalk base - ice green
- 700 128. Flowers & Frames dome ftd ruffled bowl - purple - an electric beauty!
- 600 129. Peacocks 9" plate w/ribbed back - ice blue - very pretty, very scarce
- 225 130. Peacocks 9" plate w/ribbed back - lime green - scarce color
- 180 131. Peacocks 9" plate w/ribbed back - ice green - nice
- 150 132. Peacocks 9" plate w/ribbed back - white
- 375 133. Peacocks 9" plate w/ribbed back - green - scarce color, pretty
- 500 134. Peacocks 9" plate w/ribbed back - blue - electric highlights, nice
- 140 135. Peacocks 9" plate w/ribbed back - lavender - very tiny spot of epoxy between points, pretty
- 140 136. Peacocks 9" plate w/ribbed back - purple
- 250 137. Peacocks 9" plate w/ribbed back - marigold - nice
- 275 138. N's Thin Rib mid size 13 1/2" vase - green - pretty, one of a very few vases in this sale
- 650 139. Good Luck ruffled bowl w/ribbed back - ice green - extremely rare bowl, minor plate holder nick on edge
- 375 140. Good Luck ruffled bowl w/ribbed back - ice blue - super pretty, epoxied chip on back of point
- 175 141. Good Luck ruffled bowl w/ribbed back - aqua opal - very scarce w/nice opal
- 275 142. Good Luck ruffled bowl w/ribbed back - sapphire - very rare bowl, unique irid. - small chip on horseshoe

7



15



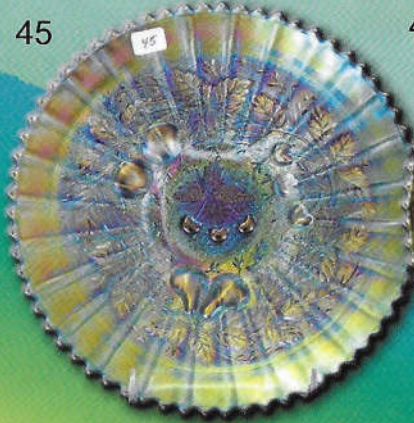
28



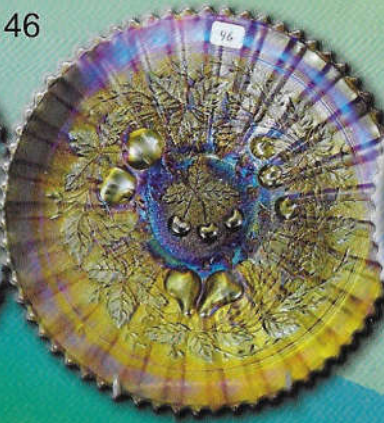
31



45



46



47



58



110



294



56



11



24



44



66



75



81



99



23



112



228



124



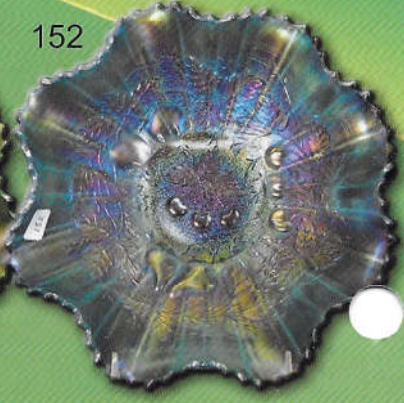
125



139



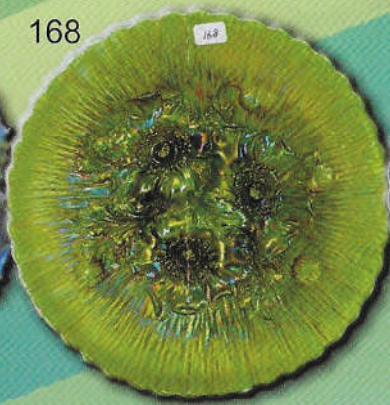
152



163



168



169



219



280



80



304



229



259



275



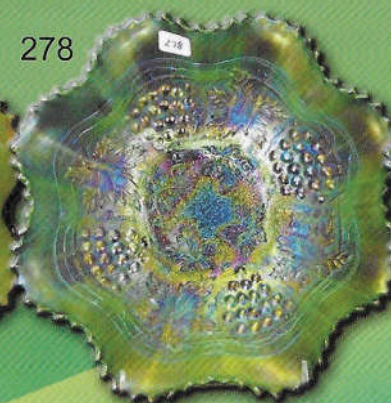
265



272



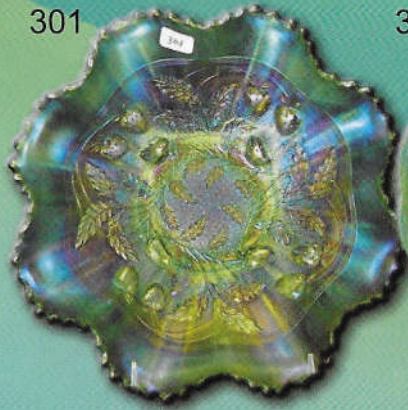
278



300



301



315



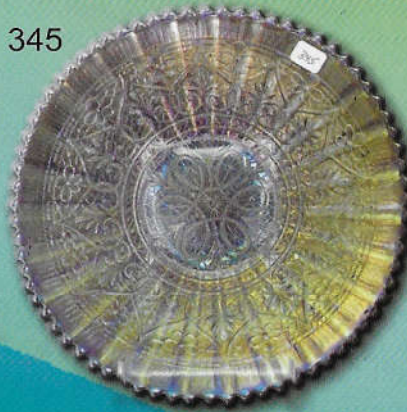
337



344



345



376



325



324



358



- 225 143. Good Luck ruffled bowl w/ribbed back - green - nice
 120 144. Good Luck ruffled bowl w/ribbed back - blue
 750 145. **Dandelion tankard water pitcher w/one tumbler purple - tankard has etching "Ella Kress 1914", pretty**
 750 146. **Rose Show Variant 9" plate - renninger blue - pretty for these, rare**
 200 147. Rose Show Variant 9" plate - marigold - minor nick on rose, nice example
 375 148. Grape & Cable hatpin holder - green - pretty
 130 149. Wishbone ftd 9" plate - marigold - scarce, nice
 275 150. N's Town Pump - purple - a classic, nice - nick on knob on handle
 750 151. **STIPPLED THREE FRUITS RUFFLED BOWL W/RIBBED BACK - LIME GREEN - CAN'T REMEMBER SEEING ANOTHER ONE OF THESE, VERY RARE**
 1700 152. **Stippled Three Fruits ruffled bowl w/ribbed back - ice blue - super pretty irid., rare!**
 1100 153. **Stippled Three Fruits ruffled bowl w/ribbed back - sapphire - rare color, nice**
 185 154. Stippled Three Fruits ruffled bowl w/ribbed back - white - pretty irid.
 550 155. Stippled Three Fruits ruffled bowl w/ribbed back - aqua opal - slight butterscotch, nice example
 300 156. Stippled Three Fruits ruffled bowl w/ribbed back - iridized custard - extremely rare, has 2nd place ribbon from 1976 Texas State Fair
 150 157. Stippled Three Fruits ruffled bowl w/ribbed back - blue - pinpoint between points
 120 158. Stippled Three Fruits ruffled bowl w/ribbed back - purple
 50 159. Stippled Three Fruits ruffled bowl w/ribbed back - marigold
 500 160. Singing Birds 7 pc. water set - green - scarce, nice
 450 161. Singing Birds 7 pc. water set - purple - nice
 250 162. Singing Birds water pitcher w/1 tumbler - marigold
 3300 163. **Hearts & Flowers ruffled bowl w/ribbed back - aqua opal - very rare bowl, has pretty, even irid.**
 440 164. Hearts & Flowers ruffled bowl w/ribbed back - ice blue - nice
 105 165. Hearts & Flowers ruffled bowl w/ribbed back - white - nice
 140 166. Grape & Cable 4 pc. table set - purple - nice matching set, chip on underside of butter bottom
 140 167. Grape & Cable 4 pc. table set - marigold - pretty set
 400 168. **Poppy Show 9" plate - green - rare color, highly desirable & nice**
 525 169. **Poppy Show 9" plate - ice green - rare color**
 525 170. **Poppy Show 9" plate - ice blue - pretty irid.**
 200 171. Poppy Show 9" plate - white - nice example
 425 172. Poppy Show 9" plate - purple
 325 173. Poppy Show 9" plate - marigold - dark, super
 275 174. Poppy Show 9" plate - pastel marigold - very nice
 275 175. **Stippled Singing Birds mug - green - very rare mug, pretty, underrated**
 75 176. Stippled Singing Birds mug - marigold
 675 177. **Stippled Grape & Cable PCE bowl w/ribbed back - lime green - extremely rare color, highly desirable**
 850 178. **Stippled Grape & Cable PCE bowl w/ribbed back - aqua opal - pastel, rare**
 350 179. **Stippled Grape & Cable PCE bowl w/ribbed back - ice blue - scarce, pretty**
 180 180. Stippled Grape & Cable PCE bowl w/ribbed back - purple - very hard to find stippled
 1100 181. **Stippled Grape & Cable Variant PCE bowl w/ribbed back - aqua opal - butterscotch, very rare & nice**
 150 182. Stippled Grape & Cable Variant PCE bowl w/ribbed back - blue - scarce, has electric highlights
 1100 183. Stippled Grape & Cable Variant PCE bowl w/ribbed back - marigold
 425 184. **Fluffy Peacock 3 pc. water set - blue - scarce color for these, nice**
 300 185. Fluffy Peacock 6 pc. water set - green - scarce - one tumbler w/large chip on base
 250 186. Fluffy Peacock water pitcher w/1 tumbler - amethyst - very pretty, scarce
 185 187. Fluffy Peacock water pitcher w/1 tumbler - marigold - nice
 250 188. **Embroidered Mums ruffled bowl w/ribbed back - ice green - scarce, nice**
 450 189. Embroidered Mums ruffled bowl w/ribbed back - ice blue - pretty irid., scarce
 120 190. Embroidered Mums ruffled bowl w/ribbed back - marigold
 1050 191. **Grape & Cable sweetmeat - marigold - rare color, very pretty Chip on rim**
 250 192. Grape & Cable sweetmeat - purple - pretty
 500 193. **Lotus & Grape 9" plate - amethyst - very scarce Fenton plate, nice**
 95 194. N's Eight Sided bushel basket - ice green - scarce
 90 195. N's Eight Sided bushel basket - white
 60 196. Strawberry 9" plate w/BW back - green
 90 197. Strawberry 9" plate w/plain back - marigold - pretty
 375 198. Wild Strawberry 8" handgrip plate - purple - super pretty irid.
 3800 199. **PEACOCK AT THE FOUNTAIN 8 PC. PUNCH SET - WHITE - VERY RARE SET, PRETTY**
 750 200. **Peacock at the Fountain 10 pc. punch set - purple - scarce set**
 1700 201. Peacock at the Fountain 6 pc. punch set - lime green top, ice green base & cups - chip off point of bowl, 1 cup perfect
 275 202. Fenton Peacock at Urn 9" plate - blue - very pretty
 160 203. Fenton Peacock at Urn 9" plate - white - pretty irid.
 1000 204. Fenton Peacock at Urn 9" plate - marigold - super, super, super
 525 205. **Lattice & Grape 7 pc. water set - blue - very pretty**
 195 206. Lattice & Grape 7 pc. water set - marigold - nice
 125 207. N's Bushel Basket - aqua opal - nice
 225 208. N's Bushel Basket - lime green - scarce color
 50 209. N's Bushel Basket - ice green
 50 210. N's Bushel Basket - lavender
 50 211. N's Bushel Basket - purple
 30 212. N's Bushel Basket - marigold
 180 213. **Stippled Strawberry PCE bowl w/ribbed back - green - scarce color**
 225 214. Stippled Strawberry PCE bowl w/ribbed back - blue - has electric highlights
 75 215. Stippled Strawber 190ry PCE bowl w/ribbed back - marigold - nice
 70 216. Stippled Strawberry PCE bowl w/ribbed back - marigold - has more pastel type irid.
 90 217. Orange Tree hatpin holder - blue - very minor toe nick
 100 218. Orange Tree hatpin holder - marigold
 850 219. **Peacocks PCE bowl w/ribbed back - ice blue - very scarce, pretty irid.**
 700 220. **Peacocks PCE bowl w/ribbed back - ice green - scarce, nice**

- 275 221. Peacocks PCE bowl w/ribbed back - horehound - very rare color, some may call this a smokey amber
- 85 222. Peacocks PCE bowl w/ribbed back - amethyst - spot of missing irid. on one bird
- 170 223. Peacocks PCE bowl w/ribbed back - purple - pretty
- 375 224. Peacocks PCE bowl w/ribbed back - green - very nice
- 200 225. Peacocks PCE bowl w/ribbed back - blue - electric highlights
- 95 226. Peacocks PCE bowl w/ribbed back - marigold
- 275 227. Persian Garden 6" plate - purple - scarce little plate
- 525 228. Leaf & Beads nut bowl - aqua opal - butterscotch, very scarce
- 575 229. Oriental Poppy 7 pc. water set - purple - nice set
- 225 230. Oriental Poppy 7 pc. water set - marigold - nice
- 120 231. Good Luck ruffled bowl w/BW back - green
- 85 232. Good Luck ruffled bowl w/BW back - purple
- 75 233. Good Luck ruffled bowl w/BW back - marigold
- 110 234. Stag & Holly giant rose bowl - marigold - scarce
- 130 235. Captive Rose 9" plate - blue
- 1800 236. Captive Rose 9" plate - marigold - has very attractive pastel irid.
- 225 237. Daisy & Drape flared out vase - aqua opal - butterscotch, nice
- 525 238. Dragon & Lotus 3 in 1 edge bowl - lime green opal - very pretty irid.
- 450 239. Rose Show Variant ruffled bowl - renninger blue - rare bowl, highly desirable
- 275 240. Rose Show Variant ruffled bowl - marigold - pretty
- 475 241. Butterfly bonbon w/Threaded back - green - scarce
- 350 242. Grape & Cable tankard water pitcher w/1 tumbler - purple - nice
- 180 243. Vintage 7" plate - amethyst - nice
- 200 244. Stippled Three Fruits PCE bowl w/ribbed back - green - scarce color, has bluish irid.
- 190 245. Stippled Three Fruits PCE bowl w/ribbed back - green - has greenish/gold irid.
- 225 246. Stippled Three Fruits PCE bowl w/ribbed back - blue - electric highlights
- 65 247. Stippled Three Fruits PCE bowl w/ribbed back - marigold - pretty
- 325 248. Grape & Cable fernery - marigold - minor pinpoint on top edge
- 150 249. Fanciful 9" plate - purple - scarce
- 140 250. Greek Key ruffled bowl w/BW back - purple - nice
- 725 251. Blackberry Block tankard water pitcher - green - very rare pitcher, nice
- 550 252. Blackberry Block 7 pc. tankard water set - marigold - pretty set
- 225 253. Peacocks PCE bowl w/BW back - green - very pretty, scarce w/BW back
- 170 254. Fenton's Peacock at Urn 8 ruffled bowl - green - nice
- 100 255. Fenton's Peacock at Urn 8 ruffled bowl - amethyst - pretty
- 65 256. Fenton's Peacock at Urn 8 ruffled bowl - marigold
- 80 257. Fenton's Peacock at Urn 6 ruffled bowl - white - pretty
- 85 258. Fenton's Peacock at Urn 6 ruffled bowl - blue
- 300 259. Hearts & Flowers ruffled compote - green - super pretty, a great example of a scarce color
- 275 260. Hearts & Flowers ruffled compote - ice green - scarce color
- 240 261. Hearts & Flowers ruffled compote - ice blue - scarce color
- 120 262. Hearts & Flowers ruffled compote - blue - electric highlights
- 130 263. Hearts & Flowers ruffled compote - purple
- 275 264. Hearts & Flowers ruffled compote - aqua opal - nice
- 1050 265. Stippled Good Luck 9" plate w/ribbed back - blue - rare plate, nice
- 550 266. Stippled Good Luck 9" plate w/ribbed back - purple - very scarce
- 180 267. Stippled Good Luck 9" plate w/ribbed back - marigold - also scarce, nice
- 50 268. Persian Medallion hair receiver - white - scarce, very nice
- 50 269. Persian Medallion rose bowl - white - also nice
- 350 270. Orange Tree 6 pc. round punch set - blue - always desired
- 85 271. Drapery 7 1/2" vase - ice green
- 500 272. Stippled Peacocks ruffled bowl w/ribbed back - apple green - unusual color, very pretty, great piece!
- 140 273. Stippled Peacocks ruffled bowl w/ribbed back - blue
- 110 274. Stippled Peacocks ruffled bowl w/ribbed back - marigold - nice
- 675 275. Springtime water pitcher w/1 tumbler - green - very rare pitcher, highly desirable, nice
- 450 276. Springtime 7 pc. water set - marigold - pretty set, one tumbler has nick
- 215 277. Stag & Holly lg size ftd ruffled bowl - blue - pretty
- 1200 278. Stippled Grape & Cable ruffled bowl w/ribbed back - ice green - super rare & super pretty, Wow!
- 725 279. Stippled Grape & Cable Variant ruffled bowl w/ribbed back - sapphire - scarce, nice
- 325 280. Peacock at the Fountain butter dish - green - very rare color, nice
- 225 281. Peacock at the Fountain butter dish - lavender - unusual color
- 250 282. Peacocks 9" plate w/plain back - green - has pretty gold irid.
- 170 283. Peacocks 9" plate w/plain back - ice green - pretty
- 180 284. Persian Medallion bonbon - red - scarce
- 65 285. Persian Medallion bonbon - lime green - marigold overlay
- 225 286. Floral & Grape water pitcher - blue
- 90 287. Floral & Grape water pitcher - marigold
- 250 288. Australian Thunderbird lg ruffled bowl - dark or purple - scarce
- 475 289. Stippled Good Luck PCE bowl w/ribbed back - renninger blue - scarce color
- 225 290. Stippled Good Luck PCE bowl w/ribbed back - blue - electric highlights
- 140 291. Stippled Good Luck PCE bowl w/ribbed back - pastel marigold - lots of pink & yellow
- 75 292. Grape & Cable bonbon - white - nice
- 140 293. Stippled Strawberry PCE bowl w/BW back - green - very pretty
- 550 294. Singing Birds mug - aqua opal - always desired, nice example
- 275 295. Singing Birds mug - white - pretty irid.
- 130 296. Singing Birds mug - lavender - pretty, neat mug
- 120 297. Singing Birds mug - green
- 40 298. Singing Birds mug - purple - pretty
- 45 299. Singing Birds mug - marigold
- 12500 300. STIPPLED STRAWBERRY RUFFLED BOWL W/ RIBBED BACK - ICE BLUE - FANTASTIC IRID., ANOTHER EXTREME RARITY, WOW!!
- 1300 301. Stippled Strawberry ruffled bowl w/ribbed back -

- 140 302. lime green - super pretty w/great irid. Stippled Strawberry ruffled bowl w/ribbed back - green - scarce, nice
- 105 303. Stippled Strawberry ruffled bowl w/ribbed back - marigold
- 450 304. Ten Mums tankard water pitcher w/1 tumbler - blue - very hard to find pitcher
- 85 305. Grape & Cable master IC bowl - white - nice
- 95 306. Grape & Cable master IC bowl - purple
- 240 307. Peacock & Grape 9" plate - marigold - very pretty
- 550 308. Sunken Hollyhock Gone with the Wind lamp - marigold - quarter sized burst in shade, otherwise great condition, very rare, has pretty irid.
- 170 309. Stippled Three Fruits Medallion spt ftd ruffled bowl - aqua opal - scarce
- 240 310. Stippled Peacocks PCE bowl w/ribbed back - green - little bit towards that apple color, pretty, not many of these around
- 275 311. Stippled Peacocks PCE bowl w/ribbed back - blue - has electric highlights
- 90 312. Stippled Peacocks PCE bowl w/ribbed back - marigold - nice
- 650 313. Pony 10 ruffled bowl - ice green - rare bowl, nice
- 90 314. Thumbprint & Ovals vase - marigold - manufacture open bubble on inside ruffle of vase
- 1000 315. Rose Show 9" plate - emerald green - very rare plate, highly desirable
- 575 316. Rose Show 9" plate - green - rare color
- 1550 317. Rose Show 9" plate - lime green - super pretty irid., large polished chip on base, who cares on a plate like this
- 700 318. Rose Show 9" plate - ice green - scarce color
- 310 319. Rose Show 9" plate - ice blue - super pretty, chip on rose
- 210 320. Rose Show 9" plate - purple - minor nick on rose
- 500 321. Rose Show 9" plate - blue - scarce, very nice
- 140 322. Rose Show 9" plate - marigold - pretty
- 375 323. Rose Show 9" plate - white
- 375 324. Peacock at the Fountain water pitcher - white - scarce color, pretty
- 950 325. Peacock at the Fountain 4 pc. water set - green - rare color, very seldom sold
- 325 326. Peacock at the Fountain 7 pc. water set - blue - nice set
- 200 327. Peacock at the Fountain 4 pc. water set - purple - nice
- 200 328. Peacocks PCE bowl w/plain back - white - scarce, very nice
- 950 329. Orange Tree w/trunk 9" plate - green - super pretty plate in this rare color
- 85 330. Orange Tree 9" plate - white - pretty
- 160 331. N's Stippled Peacock at Urn master IC bowl - marigold - dark, super
- 70 332. Dandelion mug - purple
- 350 333. Stippled Peacocks 9" plate w/ribbed back - blue - has electric highlights, scarce, nice
- 190 334. Stippled Peacocks 9" plate w/ribbed back - marigold - super nice
- 150 335. Grape Arbor hatshape - ice green - scarce, made from tumbler
- 75 336. Grape Arbor hatshape - white - scarce, made from tumbler
- 1050 337. Concord 9" plate - green - rare plate, nice
- 200 338. Four Flowers 9" IC shaped bowl - purple - very scarce in this shape
- 105 339. Peacocks ruffled bowl w/BW back - marigold - nice, scarce with this back
- 60 340. Grape & Cable 7 pc. water set - purple pitcher crack
- 115 341. Holly 9" plate - blue - nice
- 750 342. Tree Trunk 6 1/2" squatty vase - white - scarce, nice
- 55 343. Stippled Good Luck ruffled bowl w/ribbed back - marigold
- 1000 344. Hearts & Flowers 9" plate w/ribbed back - lime green - very rare plate, highly desirable
- 450 345. Hearts & Flowers 9" plate w/ribbed back - white - another rare plate, pretty
- 950 346. Hearts & Flowers 9" plate w/ribbed back - green - rare color
- 525 347. Hearts & Flowers 9" plate w/ribbed back - purple - scarce, nice
- 275 348. Hearts & Flowers 9" plate w/ribbed back - marigold - scarce
- 90 349. Beaded Cable rose bowl - aqua opal
- 95 350. Beaded Cable rose bowl - blue
- 85 351. Raspberry milk pitcher - marigold
- 210 352. Heart & Vine 9" plate - blue - scarce
- 20 353. Fanciful ruffled bowl - white - pretty
- 190 354. Grape & Cable powder jar - green - nice
- 210 355. Grape Arbor 7 pc. tankard water set - marigold - pretty
- 135 356. Basketweave Open Edge 2 sides up lg sized basket - ice green
- 475 357. Stippled & Banded Grape & Cable dresser tray - marigold - very scarce in this shape
- 200 358. Iris & Herringbone miniature cup & saucer - ruby flashed - very rare, not often sold, a great miniature
- 225 359. Iris & Herringbone miniature cup & saucer - lavender flashed - another fun set that is not often sold
- 425 360. Leaf Chain 9" plate - marigold - nice
- 65 361. Basketweave Open Edge JIP basket - red
- 120 362. Fenton's Peacock at Urn IC shaped bowl - blue - nice
- 140 363. Fenton's Peacock at Urn IC shaped bowl - lime green - marigold overlay, nice, rare color
- 30 364. Fenton's Peacock at Urn IC shaped bowl - marigold - crack in edge
- 65 365. Drapery rose bowl - aqua opal - nice
- 180 366. Peacock & Grape 3 in 1 edge bowl - lime green opal - scarce, nice
- 575 367. Inverted Strawberry powder jar - green - scarce
- 140 368. Enameled Pretty Panels water pitcher - marigold - super pretty scarce pitcher
- 40 369. Lotus & Grape ruffled bowl - green
- 120 370. Grape & Cable pin tray - marigold
- 115 371. Orange Tree w/trunk ruffled bowl - blue - nice
- 65 372. Orange Tree w/trunk ruffled bowl - marigold
- 140 373. Blackberry Spray ruffled hatshape - lime green opal - very scarce color
- 90 374. Grape & Cable PCE bowl w/BW back - green
- 100 375. Grape & Cable PCE bowl w/BW back - marigold - super
- 1150 376. GOOD LUCK PCE BOWL W/RIBBED BACK - ICE BLUE - EXTREMELY RARE BOWL & PRETTY, A DANDY
- 170 377. Good Luck PCE bowl w/ribbed back - purple - nice
- 215 378. Good Luck PCE bowl w/ribbed back - marigold - nice

Seeck Auctions
PO Box 377
Mason City, Iowa
50402

PRESORTED
FIRST CLASS MAIL
US POSTAGE
PAID
MAIL EXPEDITORS

313



Carnival Glass
2015 Auction
Sat. April 25 9:30 a.m.
Embassy Suites Hotel
Kansas City, Missouri

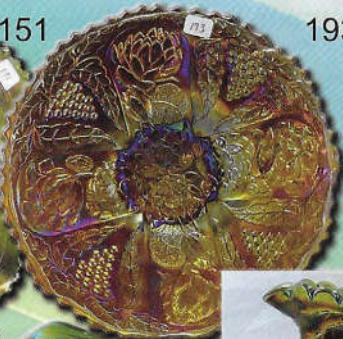
141



151



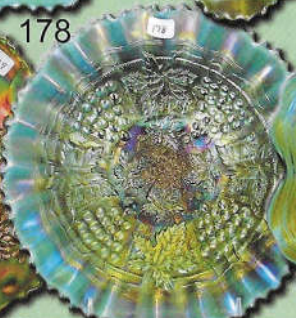
193



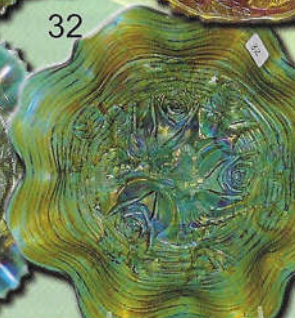
329



178



32



251



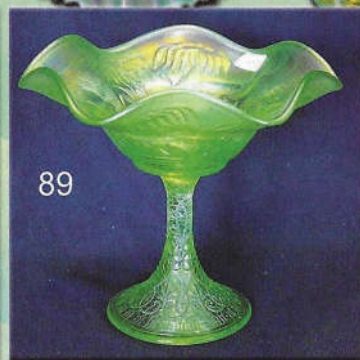
30



191



89



84

