

58.



*Heart of America
Carnival Glass
Association Convention*

Open to the Public

10.



71.

Carnival Glass 2017 Auction

Saturday, April 29, 9:30 a.m.

**Embassy Suites
Airport Hotel**



18.

**Kansas City,
Missouri**

22.



Seeck Auctions
Jim & Jan Seeck
641-424-1116

27.





SATURDAY, April 29, 2017 — 9:30 A.M.

Jim & Jan Seeck

**Embassy Suites Airport Hotel
7640 NW Tiffany Springs Parkway,
Kansas City, Mo. 64153**

641-424-1116

★ Open to the Public Preview: Friday Evening

Online absentee bidding closes, Friday, April 28 at 9 pm CST

ABSENTEE BIDDING is available on-line through Auction Flex using our online catalog at www.seeckauction.com

★ NO BUYER'S PREMIUM -- EMAIL: jimjan@seeckauction.com

The Late Les & Patti Harris Collection & The Christina Katsikas Collection

Carnival Glass from the Katsikas and Harris collections will be up for auction this year at the HOACGA convention. Both collections provide an outstanding selection of quality glass with many opportunities to buy rare and hard to find pieces. The late Les and Patti Harris are long time collectors that have put together their collection over many

years buying at auctions and conventions. Christina Katsikas is a very active collector who enjoys the beauty of the glass and is very involved in the promotion of Carnival Glass through her website: www.carnivalglassshowcase.com Sensational convention this year that you will not want to miss!

Lodging

Reservations can be made by calling the hotel directly at 816-891-7788. Ask for reservations and mention the HOACGA Convention. If you have a problem or questions about reservations at the hotel or questions about the

convention, please call Bob Grissom at: 816-356-5320.
Visit the Heart of America Carnival Glass Association on the Internet at: WWW.HOACGA.COM

Terms: Cash or Check, VISA, MasterCard and Discover accepted w/proper ID. 4% Clerking Fee on all purchases made using credit cards. Announcements made day of sale take precedence over any printed information.

We have 3 options for ABSENTEE BIDDING for our live auctions:

Sales Tax will be charged, please bring your tax-exempt numbers.

- 1) **WRITTEN OR PHONE:** If you **DO NOT** have internet access or access to our website, you can: Call us by phone to enter your bids at (641) 424-1116 **OR** By sending the numbers of the item(s) desired and the amount bid on each to: Seeck Auctions, PO Box 377, Mason City, Iowa 50402. (The mail has not been very dependable. We would prefer you call us with your bids rather than send them in a letter.)
 - All written and called in bids will be entered into the online catalog by us.
 - **Written and Phone Absentee Deadline:** Have all bids in by **Wednesday, April 26.**
- 2) **ONLINE CATALOG:** Enter your bids from our website into our online catalog through the Auction Flex system. When you get to the online catalog, you will need to login as a bidder. For the first time you will need to **set up your account** by creating a user name and password. This will include filling out a form with your name, address, etc. You will also need to **register for the auction** which will ask you to enter a valid credit card number. This card will be validated by a \$1 charge to your card. This will only happen once and you will now be able to enter bids through our online catalog by just logging in with your user name and password. You will use this user name and password for all our auctions. You are not required to pay by credit card if you are successful. This is just a safeguard for us if someone does not pay. We will let you know what you owe us through an email and you can decide how you would like to pay us.
 - *An exciting advantage of entering your bids online yourself*, is the option to be notified by email if you are outbid on an item. You will know when you are outbid on an item and you can increase your bid on that item or bid on something else. **There will be a cutoff date and time for entering your bids online, generally at 9 p.m. the night before each live auction.** After this time has passed, you will not be able to enter your bids from our online catalog.
 - *Remember*, that just because you are the high bidder in the online catalog, this does not mean you have won the item. Your bid will still need to beat the floor bidders and live phone bidders. This system will run our absentee bids just as we did before. You will still be able to buy the item lower than your online bid unless someone on the floor bids you higher.
- 3) **LIVE PHONE BIDDING:** Available on pieces with an estimated sale price of \$500 or more. If you would like to participate in live phone bidding, contact us by **the Thursday before the auction, April 27.** We will need to know the lot# and the phone number that you can be reached at on the day of the auction. We will also need your home phone number if different than the above number. Please call with questions: 641-424-1116.
 - **There is a \$7 handling charge for each successful bid.** Shipping and insurance charges are additional. bidders will be notified by phone/email if their bid(s) are successful. This will be done 1 - 3 days after the auction.
 - **If you do not receive an item that sold for less than your bid, assume we cancelled your bid because the item had a severe manufacture problem, damage or was not listed correctly.**

BID INCREMENTS: \$1 - \$100/\$5	\$100 - \$200/\$10	\$200 - \$700/\$25	\$700 - \$1,500/\$50
\$1,500 - \$3,000/\$100	\$3,000 - \$5,000/\$250	\$5000+ Auctioneer's Discretion	

- ___ 1. Four Flowers 6" plate - peach opal - fantastic, maybe the best I've seen
- ___ 2. Golden Pansy 10" oval tray - marigold
- ___ 3. Golden Pansy 6" oval tray - marigold
- ___ 4. Golden Pansy 5" oval bowl - marigold
- ___ 5. Ripple 9" vase - purple - 3 3/8" base, nice
- ___ 6. Pansy low ruffled bowl - purple
- ___ 7. Lotus & Grape ftd round sauce - aqua - scarce color
- ___ 8. Poppy pickle dish - green - nice
- ___ 9. Poppy pickle dish - marigold - pretty
- ___ 10. **Oriental Poppy 7 pc. water set - blue - electric & super, extremely rare color, can't be many complete sets around**
- ___ 11. **Oriental Poppy tankard water pitcher - sapphire - extremely rare color, nice**
- ___ 12. Oriental Poppy tumblers (2) - ice blue - these are both the ribbed version
- ___ 13. **Oriental Poppy tankard water pitcher w/1 tumbler - white - very pretty iridescence**
- ___ 14. **Oriental Poppy 7 pc. water set - green - pretty set & scarce**
- ___ 15. **Oriental Poppy 5 pc. water set - purple - another pretty set**
- ___ 16. **Oriental Poppy 6 pc. water set - marigold - nice**
- ___ 17. Leaf & Beads flared out tri-cornered bowl - purple - has rayed interior, super, super pretty!
- ___ 18. **Acorn Burrs 8 pc. punch set - ice blue - super rare set, highly desirable & nice, one cup has small nick on base**
- ___ 19. **Acorn Burrs 8 pc. punch set - green - scarce set, highly desirable & nice**
- ___ 20. Acorn Burrs 8 pc. punch set - marigold - scarce, nice
- ___ 21. Tornado small size vase - purple - scarce, nice
- ___ 22. **Peacocks ruffled bowl w/ribbed back - powder blue opal - fantastic example, extremely rare**
- ___ 23. **Peacocks ruffled bowl w/ribbed back - aqua opal - butterscotch & beautiful**
- ___ 24. Peacocks ruffled bowl w/ribbed back - purple - very pretty
- ___ 25. Peacocks ruffled bowl w/ribbed back - blue
- ___ 26. Palm Beach butter dish - white - scarce, very nice
- ___ 27. **M'burg Fleur de Lis collar based IC shaped bowl - vaseline - fantastic iridescence on this super rare piece, WOW!**
- ___ 28. Shell & Sand deep round bowl - purple - pretty
- ___ 29. **Farmyard square shaped bowl - purple - very rare shape & nice, a great opportunity**
- ___ 30. **Farmyard 6 ruffled bowl - purple - another great bowl with super pretty iridescence!**
- ___ 31. **Farmyard 3 in 1 edge bowl - purple - yet another great bowl, has pretty gold highlights**
- ___ 32. S-Repeat tumbler - marigold - rare tumbler, super pretty
- ___ 33. **Peacock at the Fountain 6 pc. punch set - ice green - extremely rare set especially with an ice green base, most come with lime green bases**
- ___ 34. **Peacock at the Fountain 8 pc. punch set - blue - super pretty set, a rare color, just a dandy**
- ___ 35. Texas tumbler - blue - Brockwitz, scarce
- ___ 36. **Tree Trunk 18" funeral vase - blue - super pretty vase, very rare color**
- ___ 37. Tree Trunk 18 1/2" funeral vase - marigold - one of the rarest colors, has a 3" chip out of base, slight manufacture peeling on top edge, fantastic shelf piece!
- ___ 38. Singing Birds butter dish - purple - very scarce part if you need it
- ___ 39. **M'burg Deep Grape square shaped compote - amethyst - very rare shape, highly desirable**
- ___ 40. Pond Lily bonbon - white - scarce color
- ___ 41. **Holly IC shaped bowl - celeste blue - beautiful & stretchy iridescence on this rare bowl, a fabulous piece!**
- ___ 42. Horse Medallion ftd IC shaped bowl - green - scarce color, super pretty
- ___ 43. **Grape & Cable mid-size 8 pc. punch set- ice green- an extremely rare set, super pretty, base is lime green which is typical for N's ice green sets**
- ___ 44. **Grape & Cable mid-size punch bowl & base - white - great iridescence on a very rare piece, WOW!**
- ___ 45. **Grape & Cable mid-size 8 pc. punch set - blue - super pretty iridescence on this extremely rare color**
- ___ 46. Grape & Cable mid-size 8 pc. punch set - purple - very pretty and hard to find set
- ___ 47. Grape & Cable mid-size 8 pc. punch set - marigold - scarce, nice
- ___ 48. M'burg Strawberry Wreath ruffled compote - green - radium & nice
- ___ 49. M'burg Strawberry Wreath ruffled compote - amethyst - radium & super, tiny nick on base
- ___ 50. **Dragon's Tongue ftd IC shaped bowl - marigold- this is a beauty! great shape w/great iridescence, these are so hard to find**
- ___ 51. Apple Blossom Twigs ruffled bowl w/smooth edge - purple - super
- ___ 52. **Poppy Show 9" plate - green - super pretty iridescence, always in demand**
- ___ 53. **Poppy Show 9" plate - ice blue - scarce**
- ___ 54. **Poppy Show 9" plate - blue - scarce, super nice, nick on poppy**
- ___ 55. Poppy Show 9" plate - marigold - dark, pretty
- ___ 56. **Poppy Show 9" plate - pastel marigold - lots of yellow irid., a dandy!**
- ___ 57. M'burg Holly Sprig tri-cornered 7" bowl - green - radium, pretty
- ___ 58. **Diamond Rib jardinière - green - an extreme rarity**
- ___ 59. Orange Tree w/trunk IC shaped bowl - blue - super pretty
- ___ 60. Orange Tree w/trunk IC shaped bowl - marigold - another super bowl
- ___ 61. **M'burg 1910 Detroit Elks ruffled bowl - amethyst- radium, super rare item, highly desirable, great opportunity**
- ___ 62. Grape & Cable lg size ruffled orange bowl- purple- nice
- ___ 63. Grape & Cable lg size ruffled orange bowl - marigold - outside of bowl has tons of pink irid.!
- ___ 64. **Good Luck ruffled bowl w/ribbed back - aqua opal - very scarce, nice**
- ___ 65. **Good Luck ruffled bowl w/ribbed back- sapphire - super pretty butterscotch irid., rare color especially with this type of irid.**
- ___ 66. Good Luck ruffled bowl w/ribbed back - sapphire - buffed spot between points
- ___ 67. **Good Luck ruffled bowl w/ribbed back - aqua - has butterscotch irid., rare color & pretty**
- ___ 68. Good Luck ruffled bowl w/BW back - horehound - scarce color, nice
- ___ 68a. Good Luck ruffled bowl w/ribbed back - blue - has pretty electric highlights
- ___ 69. Good Luck ruffled bowl w/BW back - green
- ___ 70. Good Luck ruffled bowl w/ribbed back- marigold- nice
- ___ 71. **Four Seventy Four 6 pc. punch set - purple - extremely rare set, less than a handful known a great opportunity to buy a rare set**

- ___ 72. Hearts & Flowers ruffled compote - aqua opal
- ___ 73. Hearts & Flowers ruffled compote - aqua opal - has different look than #72, base color is a little darker
- ___ 74. Hearts & Flowers ruffled compote - ice green - tiny nick on seam of base
- ___ 75. Hearts & Flowers ruffled compote - purple
- ___ 76. Hearts & Flowers ruffled compote - marigold - nice
- ___ 77. **M'burg Hobstar & Feather giant rose bowl - amethyst - super pretty example of this rare rose bowl**
- ___ 78. Greek Key ruffled bowl w/BW back - green
- ___ 79. Greek Key ruffled bowl w/BW back - purple
- ___ 80. Greek Key ruffled bowl w/ribbed back - marigold - fantastic iridescence on this beautiful piece!
- ___ 81. **M'burg Hanging Cherries compote - green - satiny, very rare, always in demand**
- ___ 82. **M'burg Hanging Cherries compote - amethyst - radium, super nice, rare**
- ___ 83. Peacock at the Fountain master berry bowl - green - rare color, nice
- ___ 84. **Rose Show ruffled bowl - emerald green - very rare color, super pretty**
- ___ 85. Rose Show ruffled bowl - purple - pretty
- ___ 86. Rose Show ruffled bowl - aqua opal - butterscotch irid.
- ___ 87. **Butterfly & Tulip square shaped ftd bowl - purple - butterfly is centered nicely, pretty, a Carnival classic**
- ___ 88. Fenton's Peacock at Urn 8 ruffled bowl - green - super!
- ___ 89. Fenton's Peacock at Urn 6 ruffled bowl - blue - electric & super!
- ___ 90. Fenton's Peacock at Urn 8 ruffled bowl - marigold
- ___ 91. **Inverted Strawberry 7 pc. tankard water set - amethyst - rare set & nice, highly desirable, two tumblers have damage on base**
- ___ 92. Fruits & Flowers bonbon - aqua opal - butterscotch, nice
- ___ 93. Fruits & Flowers bonbon - ice blue - scarce color, tiny pinpoint on base
- ___ 94. **Daisy Web tri-cornered crimped edge hat - purple - fantastic!!!**
- ___ 95. **Concord 9" plate - green - very hard to find plate, nice**
- ___ 96. **Concord 9" plate - amethyst - another hard plate to find**
- ___ 97. Ripple 9" vase - aqua teal - 2 1/2" base, have a hard time remembering selling one with this small base size, has to be quite rare
- ___ 98. **Grape & Cable 14 pc. master punch set - purple - fantastic bowl & base, a beautiful master for your collection**
- ___ 99. Holly goblet shaped compote - red - scarce
- ___ 100. **M'burg Rose Columns vase - green - highly desirable Millersburg vase, rare**
- ___ 101. Ripple 10 1/2" vase - purple - 4" base, nice
- ___ 102. **Peter Rabbit ruffled bowl - green - rare pattern, rare color, neat bowl**
- ___ 103. **Peter Rabbit ruffled bowl - marigold - rare & desirable**
- ___ 104. Little Fishes 10" ftd ruffled bowl - blue - scarce pattern
- ___ 105. Little Fishes 10" ftd ruffled bowl - marigold - very pretty
- ___ 106. **Strawberry Scroll tankard water pitcher - blue - one of my favorite shapes in Carnival Glass, rare pitcher**
- ___ 107. Horse Medallion ftd rose bowl - smokey blue - unusual color
- ___ 108. Horse Medallion ftd rose bowl - blue - nice
- ___ 109. Horse Medallion ftd rose bowl - lime green - scarce color
- ___ 110. **M'burg Multi Fruits & Flowers 11 pc. punch set - green - extremely rare set, Millersburg punch sets are so rare, a great opportunity**
- ___ 111. **M'burg Multi Fruits & Flowers 8 pc. punch set - marigold - another rare Millersburg set, nice**
- ___ 112. **Grape & Cable 7" deep round bowl - green - nice example**
- ___ 113. Orange Tree 9" plate - blue - gorgeous!! this is why we like Carnival Glass!
- ___ 113a. Orange Tree w/trunk 9" plate - marigold - dark, pretty
- ___ 114. Orange Tree w/trunk 9" plate - white - nice
- ___ 115. **Stippled Peacock at Urn master IC bowl - blue - has very pretty electric highlights, nice!**
- ___ 116. **Stippled Peacock at Urn master IC bowl - pastel marigold / clambroth / light smoke - trying to cover all our bases here**
- ___ 117. Round Up low ruffled bowl - purple - WOW! wait until you see it!
- ___ 118. **Diamond Rib 21" funeral vase - green - very tall for these plus a very pretty example, rare!**
- ___ 119. Two Flowers lg size ftd ruffled bowl - aqua - very nice bowl
- ___ 120. **M'burg Hanging Cherries powder jar - green - an ultra rarity, very seldom sold, few around, very minor heat check in base, probably was done in the making, SUPER!!**
- ___ 121. Dragon & Lotus ruffled bowl - lime green opal - lots of opal & pretty iridescence, scarce
- ___ 122. Palm Beach 6" whimsy vase - amethyst - rare vase
- ___ 123. Palm Beach 7 1/2" whimsy vase - marigold - very rare color for these, super
- ___ 124. **Peacocks 9" plate w/ribbed back - ice blue - super pretty example**
- ___ 125. Peacocks 9" plate w/ribbed back - lime green - pretty irid., scarce color
- ___ 126. Peacocks 9" plate w/ribbed back - blue - nice
- ___ 127. Peacocks 9" plate w/ribbed back - marigold - nice
- ___ 128. **Wreath of Roses square shaped punch bowl & base w/ Vintage interior - amethyst - unique shape, super pretty irid., a great piece!**
- ___ 129. Leaf Chain 9" plate - marigold - dark & pretty
- ___ 130. Leaf Chain 9" plate - white - super beautiful irid.
- ___ 131. **Grape Arbor tankard water pitcher - ice blue - dark color, pretty irid.**
- ___ 132. Grape Arbor 6 pc. tankard water set - white - frosty pitcher, scarce, one tumbler with chip on base
- ___ 133. **Grape Arbor 7 pc. tankard water set - purple - super pretty pitcher in this nice set, one tumbler has chip on base**
- ___ 134. Dinosaur bride's bowl - clear / green - Rindskopf, similar to Loetz type irid., unusual, fun piece!
- ___ 135. **1911 Birmingham Age Herald 9" plate - amethyst - super pretty plate, as nice as they get, a dandy!**
- ___ 136. **Strawberry PCE bowl w/plain back - smoke - very rare color, maybe the prettiest one of these I've sold**
- ___ 137. Strawberry PCE bowl w/plain back - green - fantastic!
- ___ 138. Strawberry PCE bowl w/plain back - purple - super
- ___ 139. Strawberry PCE bowl w/plain back - pastel marigold - super yellow irid., what a beautiful run!
- ___ 140. **Peacock at the Fountain 4 pc. table set - ice blue - rare set, lid on sugar badly damaged, creamer has large chip**
- ___ 141. Peacock at the Fountain butter dish - purple - nice
- ___ 142. **Embroidered Mums 9" plate w/ribbed back - ice green - a very rare plate & pretty**



43.

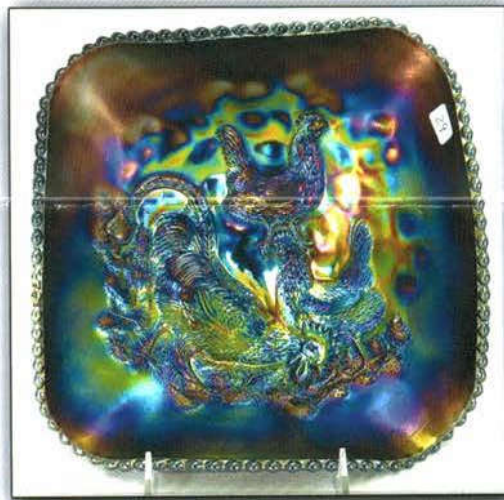
44.

50.

52.



36.



29.



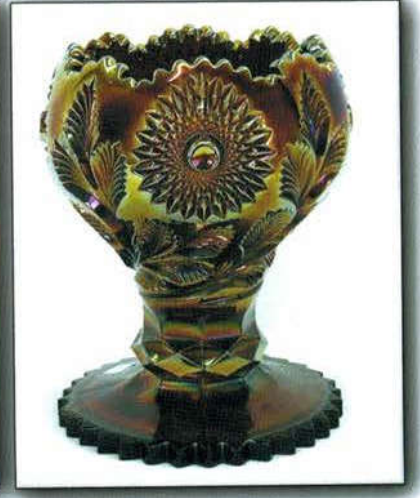
11.



81.



61.



77.

221.



136.



45.



95.

87.

150.

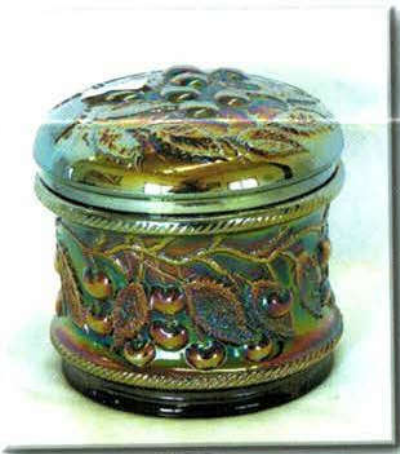


91.

152.

145.

166.



120.



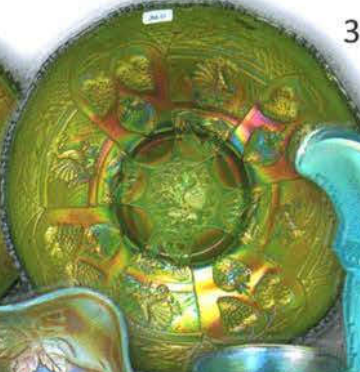
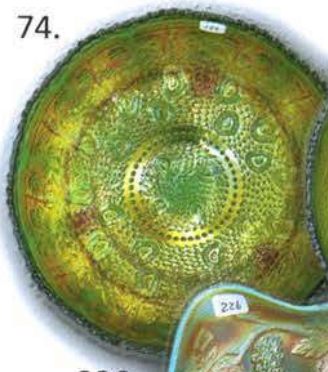
196.



194.



74.



360.



226.



363.



292.



266.

163.



247.



309.



301.



255.



321.



334.

- ___ 143. Ripple 18" funeral vase - green - scarce
- ___ 144. Ripple 18 1/2" funeral vase - marigold - very nice
- ___ **145. S-Repeat 14 pc. punch set - purple - fantastic irid. on this rare set, has 2 points on top with nicks**
- ___ 146. Windmill milk pitcher - purple - super pretty, scarce
- ___ 147. Windmill milk pitcher - smoke - scarce color
- ___ **148. Peacock at the Fountain ruffled compote - ice blue - pretty irid., for these**
- ___ 149. Peacock at the Fountain ruffled compote - blue - scarce, nice
- ___ **150. Tomahawk novelty - purple - chip on tip of handle, very rare item, not many known**
- ___ 151. Hatchet - marigold - another rare novelty, I believe both of these were from the Leonard collection
- ___ **152. Heavy Iris 3 pc. tankard water set - purple - super pretty highlights on this rare pitcher**
- ___ 153. Heavy Iris tankard water pitcher - marigold - this is incredible, there is a small manufacture split on ruffle
- ___ **154. Persian Garden 6" plate - blue - extremely rare color for these plus super nice**
- ___ **155. Greek Key 9" plate w/ribbed back - blue - rare color, bit silvery around outside**
- ___ **156. Milady tankard water pitcher - blue - rare pitcher, very nice**
- ___ **157. Grape & Cable turned in centerpiece bowl - ice blue - rare color, nice**
- ___ 158. Ski Star dome ftd 3 in 1 edge bowl - purple - very pretty
- ___ **159. Springtime 7 pc. water set - marigold - very scarce, two tumblers with chips on base**
- ___ **160. Rose Show 9" plate - blue - scarce, has electric highlights**
- ___ **161. Rose Show 9" plate - purple - scarce color**
- ___ 162. Rose Show 9" plate - marigold - dark, pretty
- ___ **163. M'burg Big Fish IC shaped bowl - green - radium, nice, rare bowl**
- ___ **164. Grape Frieze 10" ftd IC shaped bowl - iridized custard - rare & highly desirable**
- ___ **165. Grape Frieze 10" ftd IC shaped bowl - custard with blue stain - very scarce, not Carnival Glass**
- ___ **166. Raspberry milk pitcher - lime green - super pretty irid. on this rare color**
- ___ **167. Raspberry milk pitcher - white - very pretty, scarce color, very slight polishing on base**
- ___ 168. Raspberry milk pitcher - marigold
- ___ **169. Broken Arches 8 pc. punch set - purple - a super pretty set, very scarce**
- ___ 170. Garden Mums 6" plate - amethyst - scarce
- ___ 171. N's Peacock at Urn master IC bowl - ice blue - scarce, pretty
- ___ 172. N's Peacock at Urn master IC bowl - ice green - scarce, pretty
- ___ 173. N's Peacock at Urn master IC bowl - white - nice
- ___ **174. Hearts & Trees ftd centerpiece bowl - green - extremely rare bowl with less than a handful known, chip on back of point**
- ___ 175. Tree Trunk 11 1/2" mid size vase - lime green - very rare vase, nice
- ___ 176. Tree Trunk 12 1/2" vase - purple - an absolute beauty
- ___ **177. Stippled Three Fruits 9" plate w/ribbed back - blue - very pretty**
- ___ 178. Stippled Three Fruits 9" plate w/ribbed back - amethyst - pretty, most would call lavender
- ___ 179. Stippled Three Fruits 9" plate w/ribbed back - purple - pretty
- ___ 180. Peacock & Grape spt ftd IC shaped bowl - lime green opal - pretty bowl, tiny pinpoints on cleats
- ___ **181. M'burg Hobstar & Feather 15 pc. punch set - marigold - scarce & pretty set, flake on outside of one point, couple of other points are rough, hard to find**
- ___ 182. M'burg Strawberry Wreath 10" ruffled bowl - amethyst - radium & fantastic, I love this bowl!
- ___ 183. Wild Strawberry 7" handgrip plate - purple - very pretty
- ___ 184. Wild Strawberry 7" handgrip plate- marigold-dark, nice
- ___ **185. N's Peacock at Urn chop plate - purple - very scarce, nice**
- ___ 186. M'burg Blackberry Wreath crimped edge sauce - marigold - radium, pretty
- ___ **187. Diamond Rib 6" pinched in whimsey vase - green - very neat whimsey, has peeling effect on top edge, doesn't matter, where will you find another?**
- ___ 188. Leaf & Beads rose bowl - aqua opal - butterscotch
- ___ **189. Peach 7 pc. water set - blue - very pretty set**
- ___ 190. Dugan Cherries round bowl - purple - super
- ___ **191. Tree Trunk 11" vase - aqua opal - super pretty, scarce**
- ___ 192. Tree Trunk 9 1/2" vase - blue - very pretty
- ___ 193. Stag & Holly chop plate - marigold - pretty example, classic piece
- ___ **194. Colonial Lady vase - purple - outstanding, pretty example**
- ___ **195. Dandelion tankard water pitcher - green - pretty pitcher & scarce**
- ___ **196. Dandelion 7 pc. water set - purple - pitcher is outstanding, one tumbler has nick**
- ___ 197. Garden Path Variant 6" plate - peach opal - very scarce & nice
- ___ 198. Raindrops dome ftd banana boat shaped dish - purple - neat piece, nice
- ___ **199. Orange Tree ftd ruffled fruit bowl - green - very rare color & pretty for these**
- ___ **200. N's Corn vase w/plain base - marigold - dark, pretty example**
- ___ 201. N's Corn vase w/plain base - green - another very pretty example, scarce
- ___ 202. M'burg Whirling Leaves crimped edge bowl - amethyst - radium, very scarce bowl w/this crimping, pretty
- ___ 203. Springtime 4 pc. table set - marigold - nice set, scarce
- ___ **204. Wreath of Roses flared out punch bowl whimsey with base - amethyst - has Vintage interior, not many of these around, pretty neat piece**
- ___ 205. Little Flowers 3 in 1 edge 10" bowl - amberina - scarce color, nice
- ___ **206. Fanciful low ruffled bowl - purple - outstanding, fantastic!**
- ___ 207. Dandelion mug - aqua opal - butterscotch
- ___ 208. Dandelion mug - purple - scarce
- ___ **209. Crucifix candlesticks - marigold - this pair has the "INRI" mark on them, nice set, scarce**
- ___ 210. Dragon & Lotus IC shaped bowl - red - cherry red color, scarce
- ___ **211. Octagon salt & pepper shakers - purple - outstanding iridescence, extremely rare!**
- ___ **212. Octagon butter dish, creamer & cvd sugar - purple - super neat set, hard to get, open bubble on sugar lid, little roughness underneath knob of sugar lid**
- ___ **213. Octagon lg size 7 pc. water set - purple - very rare set, pitcher is wonderful, one tumbler has large chip on base**

- ___ 214. Lions 7" plate - marigold - scarce
- ___ **215. Stippled Peacocks 9" plate w/ribbed back - blue - has electric, stretchy irid., nice**
- ___ 216. Wreathed Cherry tankard water pitcher - marigold - nice even irid. from top to bottom
- ___ 217. Fenton's Peacock at Urn 9" plate - blue - nice
- ___ **218. Cut Daisy Variant 17" large bowl - marigold - probably a punch bowl without a base, have never seen anything like this, it is bigger than the master punch bowl top**
- ___ 219. M'burg Bernheimer Bros. / Many Stars ruffled bowl - blue - large chip on collar base, scarce
- ___ 220. Cosmos & Cane 10 1/2" oval pickle dish - honey amber - neat
- ___ **221. Fenton Butterfly ornament - blue - all of these are rare, blue are very rare, fabulous novelty!**
- ___ 222. Grape & Cable ruffled compote - marigold - pastel w/ yellow irid.
- ___ 223. Grapevine Lattice 7" plate - purple - fantastic irid.
- ___ 224. Peach 4 pc. table set - white - very scarce set, has gold decoration
- ___ 225. M'burg Holly Whirl ruffled bowl - green - radium & super, emerald color irid., small chip on edge
- ___ **226. Vintage 9" ruffled bowl - aqua opal - rare Fenton aqua opal piece, very nice quality**
- ___ 227. Grape & Cable banana boat - purple - super pretty
- ___ **228. Lotus & Grape IC shaped bowl - Persian blue - small nick on one point, some irid. missing on interior, rare to find**
- ___ 229. Scroll Embossed ruffled bowl - emerald green - very pretty
- ___ 230. Good Luck 9" plate w/BW back - green - nice
- ___ 231. Good Luck 9" plate w/BW back - marigold - nice
- ___ **232. Covered Frog - marigold - wonderful novelty piece, minor flake on inner rim of bottom**
- ___ **233. Owl hatpin - dark - very rare & highly desirable**
- ___ 234. Holly ruffled hatshape - red - cherry red color, nice
- ___ **235. M'burg Blackberry Wreath 6" plate - marigold - radium & pretty, Millersburg little plates are extremely hard to find!**
- ___ 236. Nippon PCE bowl w/ribbed back - aqua - very scarce color, nice example
- ___ **237. Thumbprint & Ovals vase - purple - very pretty irid., small bruise inside vase about 2" down**
- ___ 238. Peacock at the Fountain fruit bowl - purple - scarce, nice
- ___ **239. Fashion 7 pc. water set - smoke - beautiful set, scarce color**
- ___ 240. Brooklyn Bridge 10 ruffled bowl - marigold - very nice example
- ___ **241. Question Mark plate made from compote - purple - very pretty, scarce color**
- ___ 242. Singing Birds mug - white - nice
- ___ 243. Singing Birds mug - green
- ___ 243a. Singing Birds mug - purple - fantastic
- ___ 244. Round Up IC shaped bowl - purple - super pretty
- ___ **245. Memphis 8 pc. punch set - ice blue - very rare set, cracks in bowl**
- ___ 246. Dugan Cherries crimped edge ftd tri-cornered bowl - peach opal - pretty
- ___ **247. Grecian Gold ladies spittoon - marigold - neat piece, Stretch Glass**
- ___ 248. Sunflower spt ftd ruffled bowl - purple - fantastic, small chip on one cleat
- ___ 249. Persian Medallion crimped edge lg size ruffled compote - blue - pretty
- ___ **250. Hearts & Flowers 9" plate w/ribbed back - green - rare color, highly desired**
- ___ 251. Kittens cup - blue - scarce color
- ___ 252. Kittens cup & saucer - marigold - nice example
- ___ 253. Peacocks PCE bowl w/ribbed back - purple - nice
- ___ **254. Palm Beach 3 3/4" whimsey vase - white - frosty, top is shaped differently**
- ___ **255. Homestead chop plate - purple - a beautiful one with great mold work and irid.**
- ___ 256. Cosmos & Cane butter dish - honey amber - scarce
- ___ 257. Wishbone 10" ruffled bowl - green - nice
- ___ 258. Imperial Grape ruffled bowl - purple - super pretty
- ___ 259. Soda Gold 7 pc. water set - smoke - scarce set
- ___ 260. Grape & Cable Variant 9" plate w/BW back - olive green - unusual shade, nice
- ___ 261. Grape & Cable Variant 9" plate w/plain back - purple - super
- ___ 262. Blackberry Spray ruffled hat - red - nice, a little roughness on base
- ___ **263. Singing Birds 7 pc. water set - green - nice set**
- ___ 264. M'burg Grape Wreath Variant 8" ruffled bowl - amethyst - radium, super!
- ___ 265. Constellation ruffled compote - purple - very pretty
- ___ **266. Cherry Chain 6" plate - green - very rare color for this very rare plate!**
- ___ 267. Captive Rose 9" plate - blue - a bit silvery
- ___ 268. Orange Tree standard size mug - amberina - scarce mug
- ___ 269. Orange Tree standard size mug - dark aqua - most would call sapphire
- ___ **270. Aurora Pearls 11 1/2" bride's basket bowl with enameling - green - pretty**
- ___ 271. Palm Beach rose bowl w/Gooseberry interior - white - has silver enamel edge
- ___ 272. Apple Blossom Twigs 3 in 1 edge bowl - purple - super pretty
- ___ **273. Imperial Grape water pitcher - aqua - very pretty, scarce color**
- ___ 273a. Imperial Grape tumblers (4) - green - super pretty, one tumbler has burst on top edge, these match the aqua pitcher
- ___ 274. Plaid ruffled bowl - marigold
- ___ 275. Good Luck PCE bowl w/BW back - green
- ___ 276. Good Luck PCE bowl w/ribbed back - marigold - pretty
- ___ 277. Hearts & Flowers ruffled bowl w/ribbed back - purple - nice
- ___ 278. Near Cut cologne bottle - green - Cambridge, bottom of stopper has nick, scarce
- ___ **279. Two Flowers giant rose bowl - blue - extremely rare rose bowl & fantastic!**
- ___ 280. Grape & Cable dresser tray - purple
- ___ **281. Stippled Good Luck ruffled bowl w/ribbed back - renninger blue - very pretty irid. for these**
- ___ 282. Palm Beach rose bowl - amethyst - very scarce
- ___ 283. Wishbone & Spades 6" plate - purple - nice
- ___ 284. Butterfly & Fern water pitcher - marigold - pretty, even irid. from top to bottom
- ___ 285. Beaded Bullseye 8" vase - purple - pretty
- ___ **286. M'burg Peacock at Urn ruffled compote - amethyst - super pretty example, satin**
- ___ 287. Fisherman's mug - marigold - dark, pretty example
- ___ 288. M'burg Zig Zag 3 in 1 edge bowl - amethyst - radium, nice
- ___ 289. Shell & Sand deep ruffled bowl - smoke - pretty
- ___ 290. Embroidered Mums ruffled bowl w/ribbed back - blue
- ___ 291. Stork & Rushes 3 pc. water set - blue - nice
- ___ **292. Cosmos & Cane spittoon shaped compote - honey amber - very scarce shape, nice**
- ___ 293. Six Petals 8" ruffled bowl - purple - pretty

- ___ 294. Stippled Petals dome ftd ruffled bowl - purple - pretty, normal pinpoint on dome ftd base
- ___ 295. Palm Beach 6" low bowl - marigold
- ___ **296. M'burg Peacock 10" ruffled bowl - amethyst - radium, scarce**
- ___ 297. Imperial Grape 7 pc. wine set - green - has some pretty irid., unusual
- ___ 298. Raspberry 5 pc. water set - purple
- ___ **299. M'burg Seacoast pin tray - green - looks great, nice**
- ___ **300. Ranger 14" wine bottle or decanter - marigold - very hard to find, nice color**
- ___ **301. Daisy Web crimped edge JIP basket - purple - very rare piece, pretty**
- ___ 302. Flute #3939 5 pc. punch set - marigold - scarce set
- ___ **303. Stippled Good Luck 9" plate w/ribbed back - blue - rare, highly desirable & nice**
- ___ 304. Acorn ruffled bowl - red - scarce
- ___ **305. Carnival Hobstar 4 pc. table set - purple - small chips around base of spooner**
- ___ 306. Three Fruits Medallion spt ftd ruffled bowl - purple - pretty
- ___ 307. Corn bottle - marigold - nice
- ___ 308. Corn bottle - smoke - nice
- ___ **309. Rustic 19 1/2" funeral vase - amethyst - very rare vase, nice**
- ___ **310. Rustic 19 1/2" funeral vase - blue - scarce, nice**
- ___ **311. Rustic 18 1/2" funeral vase - marigold - super pretty, bottom hobs have been stretch out more than the rest of them, gives it a unique look**
- ___ 312. Three Fruits PCE bowl w/plain back - purple - has enamel decoration and is etched "Emma May Christmas 1910", very special
- ___ 313. Palm Beach whimsy 4 sides pinched in bowl - amethyst
- ___ 314. M'burg Peacock berry bowl - amethyst - radium, nice
- ___ **315. Zippered Loop 4 3/4" finger lamp - marigold - a cutie**
- ___ 316. M'burg Hobnail Swirl rose bowl - amethyst - scarce
- ___ 317. Many Fruits 13 pc. punch set - marigold - scarce, nice
- ___ 318. Many Fruits punch bowl base - purple - if you need it, it is nice
- ___ 319. Rose Garden 5" rose bowl - blue - Brockwitz
- ___ 320. Panther master berry bowl - marigold - pretty
- ___ **321. 1914 Parkersburg Elks 7" plate - blue - very scarce & highly desirable**
- ___ 322. M'burg Peacock at Urn 3 in 1 edge Mystery bowl - marigold - satin, nice
- ___ 323. Heavy Grape chop plate - purple - very pretty example
- ___ 324. Palm Beach 7" banana boat shaped dish - amethyst - has gold painted interior
- ___ **325. Poppy Show 9" plate - green - fabulous irid.! has crack center of one poppy to the center of another, extremely hard to see**
- ___ 326. Daisy & Drape turned in vase - white
- ___ **327. M'burg Feather & Heart water pitcher & 1 tumbler - green - very nice, scarce**
- ___ 328. Eagle Furniture handgrip advertising plate - amethyst - scarce
- ___ 329. Stippled Three Fruits Medallion spt ftd ruffled bowl - aqua opal - nice
- ___ 330. Sunken Daisy 5" ftd rose bowl - amethyst - pretty, has typical tiny pinpoint on feet, much of this was done in the making
- ___ 331. Sunken Daisy 3 1/2" ftd straight up bowl - lavender - cute, pretty, normal feet
- ___ 332. Sunken Daisy 4" ftd straight up bowl - marigold - normal feet
- ___ 333. Feather Stitch ruffled bowl - green - very scarce color
- ___ **334. M'burg Peacock 3 in 1 edge bowl - blue - rare blue M'burg! satin & nice!**
- ___ 335. M'burg Trout & Fly IC shaped bowl - green - satin, tiny pinpoint on edge
- ___ 336. Ripple 12 1/2" vase - purple - 3 3/8" base
- ___ 337. M'burg Grape Wreath Variant crimped edge sauce - amethyst - radium
- ___ 338. Floral Sunburst 6 1/2" flared bowl - blue - EDA
- ___ **339. N's Peacock at Urn IC sauce - ice blue - silvery irid.**
- ___ 340. N's Peacock at Urn IC sauce - ice green - silvery irid.
- ___ 341. N's Peacock at Urn IC sauce - marigold - dark, super
- ___ 342. N's Peacock at Urn IC sauce - purple - super
- ___ 343. Strawberry ruffled bowl w/plain back - green - nice
- ___ 344. Grape & Cable 7" ruffled bowl - red - scarce
- ___ 345. Imperial Grape water carafe - purple
- ___ 346. God & Home tumbler - blue - nice example
- ___ **347. Chrysanthemum ftd lg IC shaped bowl - blue - super pretty**
- ___ 348. Springtime spooner - purple
- ___ 349. Petal & Fan lg size ruffled bowl - purple - scarce
- ___ 350. M'burg Hanging Cherries tumbler - green - very nice
- ___ 351. Grape & Cable master IC bowl - purple - nice
- ___ 352. Horse Medallion JIP ftd bowl - amber - scarce color
- ___ **353. Persian Medallion 10" 3 in 1 edge bowl - green - scarce color**
- ___ 354. Octagon compote - purple - very hard to find, tiny chip on flat of base
- ___ 355. Grape & Cable Variant ruffled bowl w/plain back - purple - super pretty
- ___ 356. Miniature Morning Glory 5 1/2" vase - purple - nice
- ___ **357. Wreath of Roses punch bowl & base - amethyst - has Persian Medallion interior, scarce**
- ___ **358. Wreath of Roses punch bowl & base - marigold - has Persian Medallion interior, nice**
- ___ 359. Golden Harvest wine bottle - marigold - has pretty irid.
- ___ **360. Dragon & Strawberry collar based IC shaped bowl - green - super pretty for this rare bowl**
- ___ **361. Dragon & Strawberry collar based IC shaped bowl - blue - very scarce, highly desirable, nice**
- ___ **362. Dragon & Strawberry collar based IC shaped bowl - marigold - super pretty irid., on this rare bowl**
- ___ **363. Peacock at the Fountain water pitcher & 1 tumbler - ice blue - water pitcher is dark & super, rare**
- ___ 364. Peacock at the Fountain 7 pc. water set - blue - very scarce set, nice
- ___ 365. Peacock at the Fountain water pitcher - purple - very pretty
- ___ 366. Peacock at the Fountain 7 pc. water set - marigold - one tumbler has nick around top edge, nice
- ___ 367. Memphis punch bowl base - blue - fantastic, if you have the bowl, you have something special
- ___ 368. Leaf Columns 10 1/2" vase - green - pretty
- ___ 369. Grape & Cable cologne bottle - purple
- ___ 370. Peacock & Grape ruffled bowl - lime green - scarce color

SEECK AUCTIONS
P.O. BOX 377
MASON CITY, IA 50401

PRESORTED
FIRST CLASS MAIL
US POSTAGE
PAID
MAIL EXPEDITORS



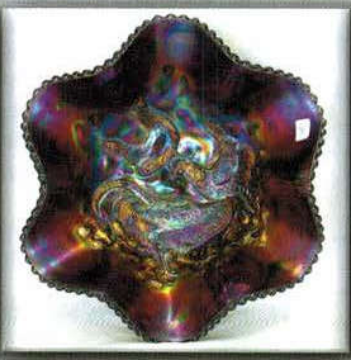
187.

**2017 CARNIVAL
GLASS AUCTION**

Sat., April 29 9:30 a.m.
Embassy Suites Airport Hotel
Kansas City, Missouri



64.



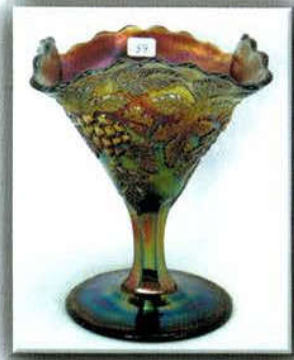
30.



235.



135.



39.



33.



156.



142.