

**THE
TARKINGTON
COLLECTION**

Heart of America
Carnival Glass Association



**Carnival
Glass
2018 Auction**

Saturday, April 28
9:30 a.m.

Embassy Suites
Airport Hotel
Kansas City, Mo.

Public
Invited



Seeck Auctions
Jim & Jan Seeck
641-424-1116



Jim & Jan Seeck

641-424-1116

SATURDAY, APRIL 28, 2018 — 9:30 A.M.

Embassy Suites Airport Hotel — Kansas City, Mo.

FRIDAY PREVIEW

★ **ABSENTEE and LIVE BIDDING** is available on-line through Auction Flex at: www.seeckauction.com

★ **NO BUYER'S PREMIUM** -- EMAIL: jimjan@seeckauction.com

THE TARKINGTON COLLECTION

The Heart of American Carnival Glass Association convention will be the host of the second Tarkington Carnival Glass auction. Carlton and Jane rarely missed a HOACGA convention and enjoyed walking around to all the rooms and talking with all the collectors. The auction has a super variety of high quality pieces as Carlton

and Jane loved all makers, all shapes and all colors. They truly bought what they liked.

Once again the HOACGA association has a great line-up of events including educational programs, room displays, banquets and, of course, lots of FUN collectors to talk with!

LODGING

Reservations can be made by calling the hotel directly at 816-891-7788. Ask for reservations and mention the HOACGA Convention. If you have a problem or questions about reservations at the hotel or questions about the convention, please call Bob Grissom at: 816-356-5320.

Visit the Heart of America Carnival Glass Association on the Internet at: WWW.HOACGA.COM

Terms: Cash or Check, VISA, MasterCard and Discover accepted w/proper ID. **4% Clerking Fee** on all purchases made using credit cards. Announcements made day of sale take precedence over any printed information.

ABSENTEE BIDDING OPTIONS

- 1) **Call us by phone at:** (641) 424-1116
- 2) **Prebid: Enter your bids from our website into our online catalog through the Auction Flex system.**
 - *An exciting advantage of entering your bids online yourself, is the option to be notified by email if you are outbid on an item. You will know when you are outbid on an item and you can increase your bid on that item or bid on something else.*
- 3) **Live Phone Bidding: Is available on pieces with an estimated sale price of \$500 or more.**
If you would like to participate in live phone bidding, contact us by **the Thursday before the auction, April 26.**
- 4) **Real-time Bidding:** Bid live during the auction through Auction Flex live webcast bidding.

There is a \$7 handling charge for each successful bid. Shipping and insurance charges are additional.

Bidders will be notified by phone/email if their bid(s) are successful. This will be done 1 - 3 days after the auction.

BID INCREMENTS:

\$1 - \$100/\$5	\$100 - \$200/\$10	\$200 - \$700/\$25	\$700 - \$1,500/\$50
\$1,500 - \$3,000/\$100	\$3,000 - \$5,000/\$250	\$5000+	Auctioneer's Discretion



THE TARKINGTON COLLECTION

CARLTON AND JANE TARKINGTON

- ___ 1. Four Pillars 12 1/2" vase w/ "Howard Furniture" adv. on base - green - pretty, rare
- ___ 2. Blackberry Spray crimped JIP CRE hat - red - scarce
- ___ 3. Peacock at the Fountain butter dish - marigold - nice
- ___ 4. Cherry Chain 6" plate - white - nice

5. NUART

Chrysanthemum chop plate - emerald green - fantastic irid., extremely rare, WOW!



- ___ 6. Corn bottle - smoke - slight roughness around top, pretty
- ___ 7. Corn bottle -

marigold - super pretty, chipping around top edge

___ 8. **Oriental Poppy tankard water pitcher - ice green - has ribbed interior, frosty & nice, extremely rare tankard!**



___ 9. Lot of 2 Oriental Poppy tumblers - ice green

___ 10. Oriental Poppy 7 pc. tankard water set - ice blue - has ribbed interior, dark color & beautiful

___ 11. Oriental Poppy 7 pc. tankard water set - white - has ribbed interior, very scarce, nice set

- ___ 12. Oriental Poppy 5 pc. tankard water set - green - very scarce
- ___ 13. Oriental Poppy 7 pc. tankard water set - purple - has ribbed interior, fantastic set
- ___ 14. Oriental Poppy 7 pc. tankard water set - marigold - has ribbed interior, very pretty

___ 15. **Tree Trunk 15 3/4" funeral vase - purple - super pretty example, just slightly too tall to call an elephant's foot, extremely rare vase**

___ 16. Wisteria tumbler - lime green - very rare color to find

___ 17. **N's Peacock at Urn master IC bowl - aqua opal - fantastic butterscotch irid., a beautiful bowl, only one or two known with butterscotch irid., a great piece!**



___ 18. **N's Peacock at Urn IC sauce - aqua opal - scarce, very nice**

___ 19. N's Peacock at Urn master IC bowl - lime green - very rare color, slightly oblong shape

___ 20. N's Peacock at Urn 7 pc. IC set - ice blue - super rare to find in a set & beautiful

___ 21. N's Peacock at Urn master IC bowl - ice green - super pretty irid.

___ 22. N's Peacock at Urn master IC bowl - white - pretty piece of white

___ 23. N's Peacock at Urn master IC bowl - blue - very scarce color & nice with electric highlights

___ 24. N's Peacock at Urn master IC bowl - purple - super, super one!

___ 25. N's Peacock at Urn master IC bowl - marigold - dark & super nice!

___ 26. N's Peacock at Urn master IC bowl - marigold - pastel & super with tons of yellow and pick irid.



- ___ 27. Grape & Cable 15 pc. master punch set - ice blue - one of the ultimate pieces of Carnival Glass in the hobby, absolutely beautiful piece of ice blue, rare opportunity, don't miss out!
- ___ 28. Grape & Cable 14 pc. master punch set - ice green - another ultimate rarity in our hobby, super beautiful, another opportunity you should not pass up!

- ___ 34. Big Basketweave 10 1/2" vase - ice blue - very pretty irid. on this scarce color

- ___ 35. Big Basketweave 10 1/2" vase - purple - very pretty

- ___ 36. Lotus & Grape 9" plate - purple - super pretty irid., a rare & beautiful piece

- ___ 37. Lotus & Grape 9" plate - green - very rare color & pretty



- ___ 38. Lotus & Grape 9" plate - blue - another rare color, highly desirable & nice
- ___ 39. Lotus & Grape 9" plate - marigold - might be the rarest color known

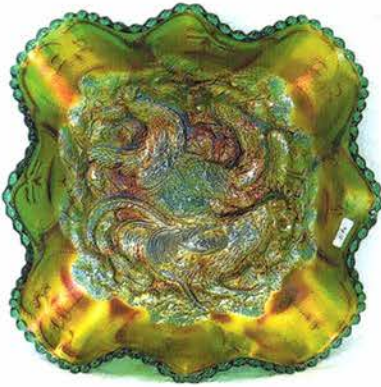


- ___ 29. Grape & Cable 14 pc. master punch set - green - most would call this one emerald, it is so fantastic, you won't believe it, there isn't a prettier one in the country, WOW!!!
- ___ 30. Grape & Cable 14 pc. master punch set - white - beautiful & rare set, small spot of epoxy on one point
- ___ 31. Grape & Cable 14 pc. master punch set - blue - super hard color to find, very pretty set
- ___ 32. Grape & Cable 6 pc. master punch set - purple - collector's favorite, very pretty
- ___ 33. Grape & Cable 14 pc. master punch set - marigold - another super set, the last one of the best run of masters ever to sell at auction

- ___ 40. Heavy Iris 7 pc. tankard water set - purple - this pitcher is outstanding! Irid. at its finest!



- ___ 41. Heavy Iris 6 pc. tankard water set - white - frosty & very pretty, extremely rare color
- ___ 42. Heavy Iris 7 pc. tankard water set - marigold - scarce



___ 43. Farmyard square ruffled bowl - green - yes, it is green! extremely rare color, only a few known, WOW!

___ 44. Farmyard square ruffled bowl - purple - rare

___ 45. M'burg Poppy round compote - green - radium, very nice

___ 46. Waterlily ftd ruffled sauce - reverse amberina opal - a beauty with lots of opal

___ 47. Waterlily ftd ruffled sauce - lime green opal - another rare color for these, nice

___ 48. Waterlily ftd ruffled sauce - red - cherry red color, pretty

___ 49. Rose Show ruffled bowl - horehound - fantastic irid. on this extremely rare color

___ 50. Rose Show ruffled bowl - sapphire - another color that rarely shows up, pretty

___ 51. Rose Show ruffled bowl - lime green - scarce color, very pretty irid., how about this run!

___ 52. Rose Show ruffled bowl - ice blue - scarce, nice

___ 53. Rose Show ruffled bowl - ice green - pretty irid.

___ 54. Rose Show ruffled bowl - blue - would call this electric

___ 55. Rose Show ruffled bowl - purple - tiny rub between ruffles, pretty

___ 56. Rose Show ruffled bowl - aqua opal - pastel, nice

___ 57. Rose Show ruffled bowl - aqua opal

___ 58. Rose Show ruffled bowl - marigold - dark, pretty



___ 59. S-Repeat 10 pc. punch set - purple - a great rarity, super pretty

___ 60. Concord 3 in 1 edge bowl - amethyst - super pretty example

___ 62. M'burg Unlettered Courthouse ruffled bowl - amethyst - radium, very rare piece of glass, not many of these out there, super nice!

___ 63. Leaf Columns 10 1/2" vase - lime green - scarce color, nice

___ 64. Dragon & Lotus 3 in 1 edge bowl - lime green opal - super pretty example, has heavy opal, very unusual to have this much opal

___ 65. Dragon & Lotus 3 in 1 edge bowl - peach opal - another nice bowl, scarce

___ 66. Lotus & Grape bonbon - red - cherry red color, nice, rare, chip on edge



___ 67. M'burg Perfection water pitcher - marigold - dark, super, radium irid. that is beautiful! Marigold is an extremely rare color, love these!!

Perfection
MILLERSBURG

___ 68. Utah Liquor Co. double handgrip advertising plate - amethyst - very nice, scarce

UTAH
LIQUOR
FENTON



___ 69. Imperial Grape water carafe - amber - fantastic irid. on an extremely rare color, great piece!!

___ 70. Imperial Grape water carafe - emerald green - super rare, pretty

___ 71. Imperial Grape water carafe - purple - a beautiful one

___ 61. Concord 3 in 1 edge bowl - green - very pretty



___ 72. Peacock at the Fountain ruffled compote - aqua opal - butterscotch at its best, extremely rare color with beautiful irid.,



___ 84. Lily of the Valley tumbler - marigold - fantastic

___ 85. Leaf Chain 9" plate - yellow - rare color with pretty irid., great opportunity



___ 73. Peacock at the Fountain ruffled compote - lime green - rare color, repaired chip on base

___ 74. Peacock at the Fountain ruffled compote - ice blue - very pretty irid., scarce

___ 75. Peacock at the Fountain ruffled compote - ice green - irid. is beautiful, not many are like this

___ 76. Peacock at the Fountain ruffled compote - white - nice

___ 77. Peacock at the Fountain ruffled compote - blue - electric & super pretty!

___ 78. Peacock at the Fountain ruffled compote - purple - scarce, nice

___ 79. Peacock at the Fountain ruffled compote - marigold - nice



___ 80. Garden Path Variant chop plate - purple - outstanding piece of glass, as nice as these get, this is a showstopper!

___ 81. Dandelion Knights Templar mug - ice green - nice irid. for these, many have none



___ 82. Dandelion mug - aqua opal

___ 83. Lily of the Valley 6 pc. tankard water set - blue - outstanding set, very hard to find, beautiful

___ 87. Leaf Chain 9" plate - green - one of the nicer ones I've seen



___ 88. Leaf Chain 9" plate - amethyst - scarce color

___ 89. M'burg Fleur de Lis rose bowl - amethyst - radium, extremely rare whimsey piece, WOW!

___ 90. Australian Butterfly Bush lg compote - marigold - nice, scarce

___ 91. Peacock at the Fountain ftd ruffled fruit bowl - aqua opal - fantastic butterscotch irid., beautiful & extremely rare, one of the nicer ones, another for the aqua opal collectors



___ 92. Peacock at the Fountain ftd ruffled fruit bowl - blue - scarce color, nice

___ 93. Peacock at the Fountain ftd ruffled fruit bowl - purple - scarce

___ 94. Peacock at the Fountain ftd ruffled fruit bowl - marigold - nice



___ 95. M'burg Primrose 3 in 1 edge bowl - blue - extremely rare, sold three of these in two years, all a different shape! satin and very nice

___ 96. Fern Brand Chocolate handgrip advertising plate - amethyst - very pretty



___ 97. Coin Spot goblet shaped whimsy compote - ice green - neat whimsy, rare color



___ 106. Hearts & Flowers 9" plate w/ ribbed back - purple - fantastic, a beauty
___ 107. Hearts & Flowers 9" plate w/ ribbed back - marigold - dark, pretty yellow irid.

___ 98. Coin Spot ruffled compote - celeste blue - super pretty with stretchy irid.

___ 99. Rustic 18 1/2" funeral vase w/ plunger base - amethyst - super irid., great big mouth, both of these are impressive

___ 100. Rustic 17 1/2" funeral vase w/ plunger base - blue - super, even irid., beautiful vase



___ 108. Raspberry water pitcher - ice blue - pretty irid. on this rare pitcher

___ 109. Raspberry tumbler - ice blue

___ 110. Raspberry 7 pc. water set - green - nice matching set

___ 111. Raspberry 7 pc. water set - marigold - dark & super, one tumbler has small burst in base



___ 112. M'burg Peacock at Urn master IC shaped bowl - amethyst - radium & super, harder to find in radium

___ 113. M'burg Peacock at Urn master IC shaped bowl - green - satin, pretty



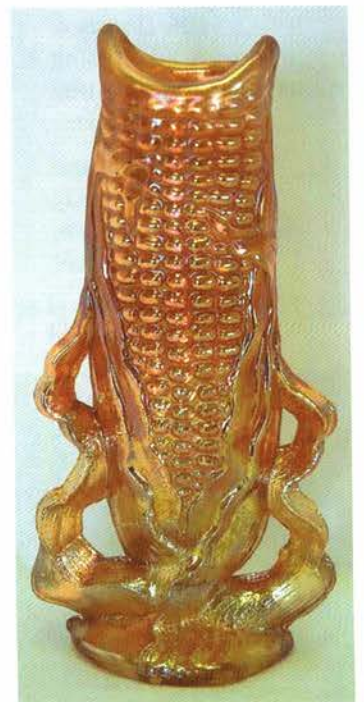
___ 114. Stippled Grape & Cable humidor - marigold - very pretty

___ 115. Persian Garden 11" IC shaped bowl - peach opal - super nice

___ 116. Persian Garden 11" IC shaped bowl - white - pretty irid.

___ 117. Luster Corn vase - marigold - Dugan, only known example, came from the Whitley collection, outstanding piece!

___ 118. Constellation ruffled compote - amethyst - fantastic, many may call it lavender



___ 101. Jockey Club handgrip advertising plate - amethyst - scarce



___ 102. Hearts & Flowers 9" plate w/ ribbed back - lime green - rare plate & pretty

___ 103. Hearts & Flowers 9" plate w/ribbed back - ice blue - scarce, pretty

___ 104. Hearts & Flowers 9" plate w/ ribbed back - white - nice irid.

___ 105. Hearts & Flowers 9" plate w/ribbed back - green - very pretty example for these





- ___ 119. Wishbone ftd ruffled bowl - ice green - very scarce color
- ___ 120. Wishbone ftd ruffled bowl - ice blue - super pretty irid., dark color
- ___ 121. Wishbone ftd ruffled bowl - white - loaded with fantastic, stretchy type irid.



- ___ 122. Peacock at the Fountain 4 pc. punch set - lime green w/ice green base - extremely rare item, most lime green bowls come with ice green bases, cups are ice green
- ___ 123. Peacock at the Fountain 9 pc. round shaped punch set - white - fantastic irid. on a rare color in a very rare shape
- ___ 124. Peacock at the Fountain 8 pc. punch set - purple - super pretty

- ___ 125. Peacock at the Fountain 8 pc. punch set - marigold - dark & nice
- ___ 126. Dorsey & Funkenstein advertising ruffled bowl- purple - tiny sliver on base

- ___ 127. Superb Drape vase - green - only one known in green, beautiful piece!



- ___ 128. Dahlia 7 pc. water set - white w/blue stain - super set, not often sold



- ___ 129. Dahlia 5 pc water set - marigold - beautiful marigold
- ___ 130. Nippon PCE bowl w/ribbed back - horehound - true horehound color with fantastic irid., rare piece!

- ___ 131. Nippon PCE bowl w/ribbed back - aqua - super pretty, rare color



- ___ 132. Nippon PCE bowl w/ribbed back - lime green - very pretty irid., another scarce color
- ___ 133. Nippon PCE bowl w/ribbed back - ice blue - pretty
- ___ 134. Nippon PCE

bowl w/ribbed back - purple - super!!!

- ___ 135. M'burg 1910 Detroit Elks IC shaped bowl - amethyst - radium, center of bowl lacks irid.



- ___ 136. Little Flowers 10" ruffled bowl - red - cherry red color, a beauty

- ___ 137. Fentonia water pitcher - marigold - dark, pretty

- ___ 138. Lot of 2 Fentonia tumblers - marigold

- ___ 139. Homestead chop plate - emerald green - very rare color, nice
- ___ 140. NUART Homestead chop plate - smoke - rare color w/pretty irid.



- ___ 141. Grape & Cable small size ruffled fruit bowl - ice green - scarce, nice
- ___ 142. Grape & Cable small size ruffled fruit bowl - ice blue - dark, pretty
- ___ 143. Grape & Cable small size ruffled fruit bowl - green - pretty
- ___ 144. Grape & Cable small size ruffled fruit bowl - purple - has hit towards center of inside of bowl
- ___ 145. Stag & Holly lg size ftd ruffled bowl - amberina w/ red streaks - very unique and unusual bowl
- ___ 146. Rose Show Variant ruffled bowl - marigold - very pretty irid., towards the pastel side



___ 147. Geo. W. Getts
Pianos advertising 6"
plate - amethyst - rare,
nice

**GEO. W.
GETTS**
FENTON



___ 156. Fruit Salad 8 pc. punch set - peach opal - fantastic
set w/great opal, another top rarity, one cup has
chip on top edge

___ 157. Fruit Salad 8 pc. punch set - marigold - scarce set,
epoxy on base of bowl

___ 158. E.A. Hudson Co.
advertising 6" plate -
amethyst - another nice
advertising piece

___ 159. M'burg Trout
& Fly IC shaped bowl -
marigold - radium, very
hard to find in radium

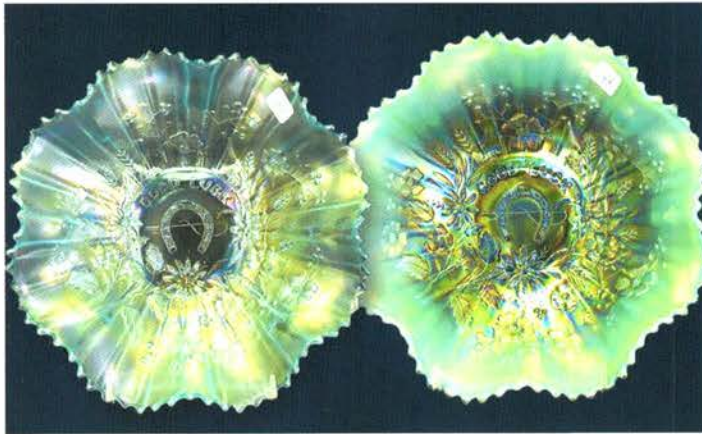


___ 160. Thistle 9" plate
- amethyst -
rare plate, nice

___ 161. Grape & Cable
giant ruffled compote
- green - scarce color &
nice



THISTLE
FENTON



___ 148. Good Luck ruffled bowl w/ribbed back - aqua
opal - pastel & super w/lots of opal, just
beautiful, tiny spots of epoxy on two of the cleats

___ 149. Good Luck ruffled bowl w/ribbed back -
ice blue - scarce, nice

___ 150. Good Luck ruffled bowl w/ribbed back - sapphire -
super pretty example of this scarce color

___ 151. Good Luck ruffled bowl w/ribbed back - green -
very nice

___ 152. Good Luck ruffled bowl w/ribbed back - lavender -
very nice

___ 153. Good Luck ruffled bowl w/ribbed back - purple -
super

___ 154. Good Luck ruffled bowl w/ribbed back - marigold -
dark, nice



___ 155.
Fruit Salad
punch bowl
& base - blue
opal - only
one known,
one of the top
Westmoreland
pieces, very
small chip
out of the
collar base
of bowl, rare
opportunity

FRUIT SALAD
WESTMORELAND



___ 162. Luster
Rose 7 pc. water
set - purple -
super pretty set

- ___ 163. Holly 9" plate - teal green - super pretty plate, rare color
- ___ 164. Holly 9" plate - green - very pretty
- ___ 165. Holly 9" plate - blue - nice
- ___ 166. Plaid IC shaped bowl - red - very scarce bowl



___ 167. Loganberry vase - purple - pretty, always in demand

___ 168. Loganberry vase - amber - bottom of base looks as if glass has crystallized, probably in the making

___ 169. Concave Diamonds tumble up - vaseline - scarce piece, crack in handle where it applies



___ 170. Poppy Show 9" plate - green - scarce color for these, nice

- ___ 171. Poppy Show 9" plate - blue - scarce, nice
- ___ 172. Poppy Show 9" plate - purple - hard color to get
- ___ 173. Poppy Show 9" plate - marigold - nice



___ 174. Poppy Show 9" plate - white - chip on edge, chip on poppy

___ 175. Vineyard water pitcher - peach opal - lots of opal for these, scarce

___ 176. Vineyard 5 pc. water set - purple - very pretty set, tough to find, pretty

___ 177. Stippled Strawberry ruffled bowl w/ribbed back - lime green - rare color, nice



___ 178. 1910 Atlantic City Elks bell - blue - very rare bell, pretty, does not have the clapper

1910
ATLANTIC
CITY
ELKS BELL
FENTON

___ 179. Peacocks PCE bowl w/ribbed back - lime green - very hard to find color, nice

___ 180. Peacocks PCE bowl w/ribbed back - ice green - scarce color, nice

___ 181. Peacocks PCE bowl w/plain back - white - rare

___ 182. Peacocks PCE

bowl w/ribbed back - green - very pretty

___ 183. Peacocks PCE bowl w/ribbed back - purple - some may call lavender, pretty

___ 184. Peacocks PCE bowl w/ribbed back - blue - scarce

___ 185. Peacocks PCE bowl w/ribbed back - marigold - dark, nice

___ 186. Peacocks PCE bowl w/ribbed back - pastel marigold - pretty

___ 187. Dreibus Parfait Sweets advertising 6" plate - very pretty, scarce

___ 188. Panther ftd ruffled sauce - red - scarce color



___ 189. Apple Blossom Twigs 9" plate w/smooth edge - purple - super beautiful

___ 190. Enameled Dianthus tankard water pitcher - ice green - rare pitcher, pretty

___ 191. Enameled Dianthus 7 pc. water set - white - another rare set

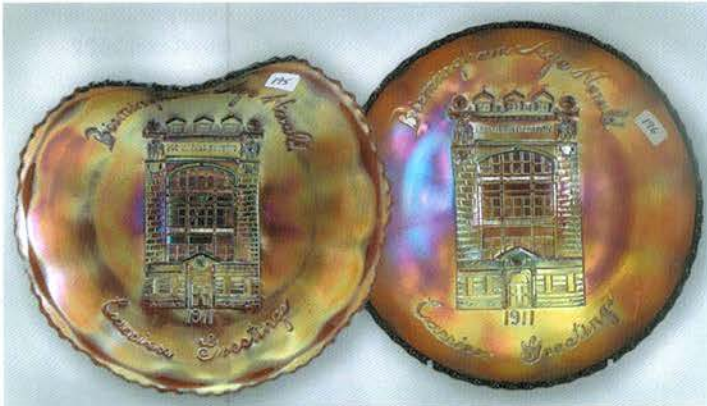


___ 192. M'burg Nesting Swan diamond shaped crimped edge bowl - green - radium, rare, very small spot of epoxy on edge of ruffle



___ 193. Flowers & Frames dome ftd tri-cornered crimped edge bowl - purple - pretty

___ 194. M'burg Hanging Cherries butter dish - marigold - if you need it, it is a nice one



___ 195. 1911 Birmingham Age Herald handgrip whimsey 9" plate - amethyst - only one known, extremely rare and neat whimsey

___ 196. 1911 Birmingham Age Herald IC shaped bowl - amethyst - rare shape, very nice



___ 197. Hearts & Flowers ruffled compote - renninger blue - rare color, nice run coming up

___ 198. Hearts & Flowers ruffled compote - lime green - very pretty

___ 199. Hearts & Flowers ruffled compote - ice blue - nice irid.

___ 200. Hearts & Flowers ruffled compote - aqua opal - nice

___ 201. Hearts & Flowers ruffled compote - green - scarce color, pretty

___ 202. Hearts & Flowers ruffled compote - blue - nice, tiny nick on base by seam

___ 203. Hearts & Flowers ruffled compote - amethyst - nice

___ 204. Hearts & Flowers ruffled compote - marigold - pretty

___ 205. Picture Frame - purple - only known untrimmed version, super rarity!



___ 206. M'burg Hanging Cherries 10" ruffled bowl - marigold - satin, pretty

___ 207. Dragon & Lotus ruffled bowl - red - cherry red color w/red irid., pretty, chip on one point



___ 208. Dragon & Lotus ruffled bowl - lime green opal - scarce color

___ 209. Acanthus deep round bowl - purple - super pretty

___ 210. Four Flowers Variant 9" plate - ice green - super pretty irid., quite scarce

___ 211. Windmill milk pitcher - purple - scarce, pretty

___ 212. M'burg Feather & Heart 5 pc. water set - marigold - nice matching set, scarce

___ 213. Open Rose 9" plate - purple - super pretty example, very scarce

___ 214. Open Rose 9" plate - amber - pretty, couple rubs on roses



___ 215. 1911 Atlantic City Elks 7" IC shaped bowl - blue - very pretty for these, scarce

___ 216. M'burg Blackberry Wreath 10" IC shaped bowl - amethyst - radium, nice, small chip on collar base

- ___ 217. Tree Trunk midsize 12" vase - lime green - super nice vase
- ___ 218. Tree Trunk midsize 13" vase - ice blue - scarce color, very nice



- ___ 219. Tree Trunk midsize 13" vase - white - pretty, scarce
- ___ 220. Tree Trunk midsize 15 1/2" vase - blue - a little taller than most, electric highlights
- ___ 221. Tree Trunk midsize 12 1/2" vase - green - very nice
- ___ 222. Tree Trunk midsize 13" vase - purple - pretty

- ___ 232. Leaf & Beads rose bowl - sapphire - rayed interior, rare color
- ___ 233. Leaf & Beads rose bowl - green - rayed interior, pretty
- ___ 234. Leaf & Beads rose bowl - purple - rayed interior, chip on foot
- ___ 235. Leaf & Beads rose bowl - marigold - rayed interior
- ___ 236. Gevurtz Bros advertising handgrip plate - amethyst - very scarce



- ___ 237. Broken Arches 8 pc. punch set - purple - very scarce set, bowl is super
- ___ 238. Broken Arches 6 pc. punch set - marigold - scarce, nice



- ___ 223. Stippled Peacocks 9" plate w/ribbed back - renninger blue - super pretty irid. for this rare color

- ___ 224. Stippled Peacocks 9" plate w/ribbed back - blue - has electric highlights

- ___ 225. Stippled Peacocks 9" plate w/

ribbed back - marigold - very pretty w/slightly stretchy irid.

- ___ 239. M'burg Strawberry Wreath 9 1/2" square shaped bowl - amethyst - radium, pretty hard to find
- ___ 240. Cherry & Cable 5 pc. water set - marigold - one tumbler has chips on base



- ___ 241. N's Peacock at Urn chop plate - purple - one of the prettier ones, very scarce & highly desirable

- ___ 226. Fluffy Peacock 7 pc. water set - amethyst - scarce set, nice match

- ___ 227. Fluffy Peacock 7 pc. water set - marigold - nice set

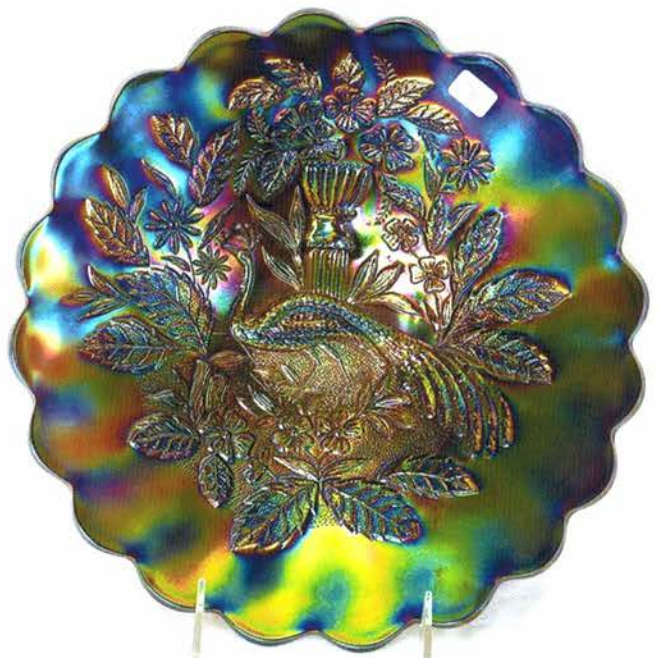


- ___ 228. Orange Tree 9" plate - blue - nice, tiny nick on point

- ___ 229. Orange Tree 9" plate - marigold - pretty

- ___ 230. Petal & Fan 6" crimped edge plate - purple - super!!

- ___ 231. Dugan Cherries 9" IC shaped bowl - peach opal - unusual shape





- ___ 242. N's Bushel Basket - aqua - very scarce color, nice
- ___ 243. N's Bushel Basket - aqua opal
- ___ 244. N's Bushel Basket - lavender - very pretty
- ___ **245. Persian Medallion 9" plate - white - super pretty irid. on this very scarce plate**

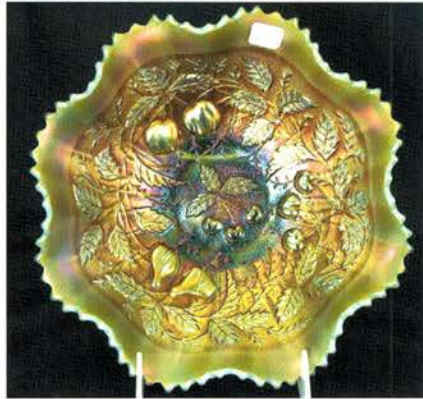
- ___ 246. Persian Medallion 9" plate - blue - very nice example
- ___ 247. Stippled Grape & Cable bonbon - aqua opal - super rare color, highly desirable
- ___ 248. Florentine #349 10 1/2" candlesticks - red - Fenton, rare, nice

___ **249. Stippled Three Fruits ruffled bowl w/ribbed back - aqua opal - scarce, nice**

___ 250. Stippled Three Fruits ruffled bowl w/ribbed back - marigold - dark, super

___ 251. Holly ruffled bowl - red - has amberina base, chip on base by seam

- ___ 252. Singing Birds mug - aqua opal - very scarce, nice
- ___ 253. Singing Birds mug - blue



___ **254. Imperial Flute water pitcher - aqua teal - very rare pitcher in this color, nice**

___ 255. Imperial Flute tumbler #3 tumbler - aqua teal - very scarce



___ 256. Good Luck 9" plate w/ribbed back - green - very pretty example, eraser size irid. spot at 2 o'clock

___ **257. Petal & Fan 10" ruffled bowl - purple - super pretty**

___ 258. Ten Mums CRE bowl - green - another beauty!



___ **259. Imperial Grape 9" plate - purple - fantastic irid. on this super piece**

- ___ 260. Poppy Show ruffled bowl - pastel marigold - has a clambroth look
- ___ 261. Stippled Good Luck PCE bowl w/ribbed back - blue - nice



- ___ 262. Dragon & Lotus IC shaped bowl - reverse amberina - very nice, scarce color
- ___ 263. Parlor Panels 4" squatty vase - smoke

___ **264. Dugan's Heavy Grape large 8 ruffled bowl - purple - super pretty & very scarce**

___ 265. Dugan's Heavy Grape large 6 ruffled bowl - peach opal - very nice



___ **266. Peach water pitcher - white w/ gold decoration - very scarce, nice**

___ 267. Peach tumbler - white w/gold decoration

___ 268. M'burg Hanging Cherries 10" IC shaped bowl - aqua - rare color, satin & pretty

- ___ 269. Heart & Vine 9" plate - blue - super pretty
- ___ 270. Orange Tree loving cup - green - super pretty, a beautiful one!

- ___ 271. Orange Tree loving cup - blue - very nice
- ___ 272. Orange Tree loving cup - marigold - dark, super
- ___ 273. Grape & Cable turned in centerpiece bowl - purple - super pretty

___ 274. Stippled Rays ruffled compote - celeste blue - nice w/stretchy irid.

- ___ 275. Orange Tree 3 in 1 edge bowl - green - very pretty
- ___ 276. Enameled Iris w/diagonal band 4 pc. tankard water set - marigold





___ 277. Cone & Tie tumbler - purple - super pretty, rare tumbler

___ 278. Zipper Loop 9 1/4" kerosene lamp - marigold - 5 1/2" base, nice

___ 279. Rose Show 9" plate - amethyst - scarce color to find

___ 280. Poinsettia & Lattice ftd ruffled bowl - marigold - nice

___ 281. Nautilus whimsy creamer - purple - pretty

___ 282. Nautilus whimsy sugar bowl - purple - very nice, great matching pair

___ 283. Peacock & Grape ruffled bowl - peach opal - very pretty example

___ 284. Orange Tree 8 pc. ruffled punch set - white - super pretty set, as nice as they get

___ 285. Orange Tree ruffled punch bowl & base - blue - very nice

___ 286. Orange Tree 8 pc. ruffled punch set - marigold - pretty



___ 287. Stippled Grape & Cable Variant 9" plate w/ribbed back - sapphire - scarce color, nice



___ 288. Stippled Grape & Cable Variant 9" plate w/ribbed back - purple - as nice as they get, scarce color

___ 289. Stippled Grape & Cable Variant 9" plate w/ribbed back - marigold - nice, scarce

___ 290. Morning Glory 15 1/2" funeral vase - purple

___ 291. Butterfly & Berry 7 pc. water set - marigold - pretty

___ 292. Peacocks ruffled bowl w/ribbed back - aqua opal - nice



___ 293. Peacocks ruffled bowl w/ribbed back - purple - pretty

___ 294. Grape & Cable cracker jar - ice green - very scarce color, nice

___ 295. Chrysanthemum ruffled bowl - red - irid. spots in center

___ 296. Nippon 9" plate - marigold - very scarce

___ 297. N's Corn vase w/plain base - purple - nice example

___ 298. Grape & Cable candle lamp - marigold - scarce, nice



___ 299. Fenton's Grape & Cable 7" ruffled bowl - red

___ 300. Poppy Show vase - marigold - dark, nice

___ 301. Fanciful 9" plate - blue - a beauty, scarce

___ 302. Vintage 10" IC shaped bowl - red - lacks irid.



___ 303. Milady 7 pc. water set - blue - very pretty & scarce set



___ 304. Peacocks 9" plate w/BW back - white - scarce w/ BW back, super pretty irid. on front and back



___ 305. N's Town pump - green - rare color, nice

___ 306. Horse Medallion rose bowl - smokey powder blue - very scarce color for this rose bowl

___ 307. Dandelion tankard water pitcher - purple - super pretty!

___ 308. 1910 Detroit Elks ruffled bowl - green - always in demand

___ 309. Circle Scroll 7 3/4" vase - purple - a beauty

___ 310. Eat Paradise Sodas advertising 6" plate - amethyst-very nice

___ 311. N's Thin Rib 7" squatty vase - ice blue - scarce color, nice

___ 312. Wishbone & Spades 6" plate - purple - very pretty, has some stretchy irid.

___ 313. Stippled Grape & Cable PCE bowl w/ribbed

back - ice blue - scarce, very pretty

___ 314. Garden Mums 6" plate - amethyst - pretty example

___ 315. Waffle Block punch bowl, base & 1 cup - clambroth - this pattern has a great modern look

___ 316. Stippled Peacocks PCE bowl w/ribbed back- blue - scarce

___ 317. Singing Birds 7 pc. water set - green - pretty set

___ 318. Singing Birds water pitcher - marigold - dark, pretty

___ 319. Pair of Singing Birds tumblers - marigold

___ 320. Plume Panels 11" vase - red - very pretty example, so tough in red

___ 321. Grape & Cable small size 8 pc. round punch set - purple - much harder to find the round sets

___ 322. Grape & Cable small size 7 pc. round punch set - marigold - also hard to find in the round set



___ 326. Diamond Rib 21 1/2" funeral vase - marigold - nice even irid. from top to bottom, extremely rare

___ 327. Embroidered Mums PCE bowl w/ribbed back - sapphire - extremely rare bowl, nice



___ 328. Starflower water pitcher - blue - super, super pretty example, a nice rarity, chip on collar base at seam that is iridized over

___ 329. Stippled Three Fruits 9" plate w/ribbed back - marigold - nice



___ 323. Stippled Grape & Cable 9" plate w/ribbed back - green - super pretty

___ 324. M'burg Wild Rose 10 1/2" lg sewing lamp - amethyst - 6 3/4" base, spot of epoxy on bottom of base



___ 325. Wishbone & Spades chop plate - purple - super pretty example, nice even irid.

THE TARKINGTON COLLECTION

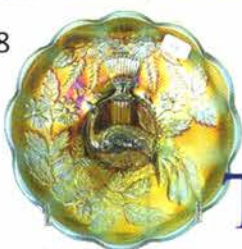
Part III
live
auction:
To be
announced

Thank you for your interest.

Lots not featured inside include:



**2018 CARNIVAL
GLASS AUCTION**
SAT., APRIL 28 9:30 A.M.
EMBASSY SUITES
AIRPORT HOTEL,
KANSAS CITY, MO.



**THE
TARKINGTON
COLLECTION**

SEECK AUCTIONS
JIM & JAN SEECK
MASON CITY, IA 50401
WWW.SEECKAUCTION.COM

