

The  
Reyan Collection

Heart of America  
Carnival Glass Association

Online Only  
Carnival Glass  
2021 Auction

Saturday, April 24  
9:30 a.m.

Columbia Club ♦ 551 South Taft Ave.  
Mason City, Iowa

Seeck Auctions  
Jim & Jan Seeck  
641-424-1116







Jim & Jan Seeck

**SATURDAY, APRIL 24 — 9:30 A.M.**

641-424-1116

★ **BIDDING** is available on-line through Auction Flex at: [www.seeckauction.com](http://www.seeckauction.com)

★ **NO BUYER'S PREMIUM** -- EMAIL: [jimjan@seeckauction.com](mailto:jimjan@seeckauction.com)

## The Reyan Collection

The year has come and gone and we are sorry to say that the HOACGA convention in Kansas City has once again been canceled due to hotel policies concerning Covid. We will continue this year to sell the fantastic Reyan collection as an Online Only Auction. Travis has collected for many years and is always out

and about hunting for glass. The variety of glass in the auction is awesome including some fabulous whimsies which just don't come out very often. You may bid as usual Online Only or you may bring your laptops, iPads, etc. to Mason City and join us for the "HOACGA Lite Event" - **Details below**

### 2021 HOACGA Lite Event – April 23rd and 24th

#### Contemporary Online Only Auction

- ◆ Starts Monday, April 19th
- ◆ Ends Friday evening, April 23rd beginning at 7 pm CST

#### Saturday, April 24th – The Travis Reyan Online Only Carnival Glass Auction

- ◆ Starts Monday, April 5th
- ◆ Ends Saturday morning, April 24th beginning at 9:30 am CST

**Both of these Online Only auctions will be open and available for viewing at the Columbia Club in Mason City, Iowa.** This is a great venue with plenty of room for glass viewing and social distancing. We will have round tables set up for seating. You are welcome to come and view the glass and bid during the contemporary auction on Friday eve-

ning and the Reyan Auction on Saturday. We will have extension cords for your computers and WiFi will be available. After the completion of each auction you may check out and take your successful purchases with you. As of right now, masks are required to be worn in the Columbia Club.

**Columbia Club — 551 S. Taft Ave.  
Mason City, Iowa 50401**

#### Bob & Shirley Patterson Open House

Wonderful collection of Carnival Glass, Hansen Glass and Art Glass - Friday, April 23rd - 12 noon to 3 pm – light lunch will be served.  
(310)733-7867 2929 Rainbow Drive, Mason City, Iowa 50401

- ◆ **Preview of all auction glass starts at 3 pm on Friday, April 23**
- ◆ Dinner on your own Friday evening (all of the restaurants are open in Mason City)
- ◆ Lunch will be served at the Columbia Club on Saturday noon during the Reyan Auction.

**If you plan on attending the auctions, please RSVP to Jim and Jan Seeck by email or phone call.**  
[jimjan@seeckauction.com](mailto:jimjan@seeckauction.com) or 641-424-1116

**LODGING:** ( all of these are close to the Columbia Club with the Historic Park Inn being downtown ) Country Inn & Suites: 641-423-1770; Holiday Inn Express & Suites: 641-424-1200; Hampton Inn 641-435-7500; The Historic Park Inn: 641-422-0015 (only remaining Frank Lloyd Wright designed hotel in the world)

**Visit the Heart of America Carnival Glass Association on the Internet at: [WWW.HOACGA](http://WWW.HOACGA).**



- \_\_\_ 1. Flute breakfast set - purple - pretty
- \_\_\_ 2. Fruits & Flowers 7" ruffled bowl - amethyst opal - unusual & rare color for this piece, opal on three ruffles
- \_\_\_ 3. Fruits & Flowers 7" ruffled bowl - blue - very pretty



\_\_\_ 4. Double Dutch ftd ruffled bowl - clambroth - very pretty yellow irid.

\_\_\_ 5. **Tree Trunk 13" midsize vase- marigold on moonstone - spectacular piece of glass, fantastic irid. & extremely rare, WOW**

\_\_\_ 6. Tree Trunk 13" midsize vase - purple - very pretty, has Fenton Factory numbers on bottom

\_\_\_ 7. Tree Trunk 13" midsize vase - marigold - super

\_\_\_ 8. Tree Trunk 13" midsize vase - custard w/nutmeg - not Carnival Glass, scarce

\_\_\_ 9. Tree Trunk 13 1/2" midsize vase - black glass - not Carnival Glass, not iridized, scarce

\_\_\_ 10. Tree Trunk 14" midsize vase - clear glass - not Carnival Glass, not iridized, scarce

\_\_\_ 11. **N's Peacock at Urn master IC bowl - aqua opal - originally from the Whitley Collection, spectacular, as nice as these get**



\_\_\_ 12. N's Peacock at Urn master IC bowl - ice blue - nice

\_\_\_ 13. N's Peacock at Urn master IC bowl - purple - nice for these

\_\_\_ 14. N's Peacock at Urn master IC bowl - marigold - dark w/pretty pink highlights

\_\_\_ 15. N's Peacock at Urn master IC bowl - pastel marigold - lots of yellow & pink

\_\_\_ 16. **M'burg Ohio Star 16" whimsy swung vase - green - fantastic radium irid., absolutely beautiful & rare, a top piece in the auction**

\_\_\_ 17. Cherry Chain 10" ruffled bowl - marigold - very pretty



\_\_\_ 18. **Good Luck 9" plate w/ribbed back - ice green - not only extremely rare, absolutely beautiful**

\_\_\_ 19. **Good Luck 9" plate w/ribbed back - ice blue - another rare plate w/great irid.!**



\_\_\_ 20. **Good Luck 9" plate w/ribbed back - blue - electric & fantastic, a stunning plate**

\_\_\_ 21. Good Luck 9" plate w/BW back - horehound - as pretty as they get w/beautiful irid.

\_\_\_ 22. Good Luck 9" plate w/ribbed back - green - another beautiful plate, many would call emerald

\_\_\_ 23. Good Luck 9" plate w/ribbed back - purple - very pretty

\_\_\_ 24. Good Luck 9" plate w/ribbed back - marigold - pretty, WOW, what a wonderful run of Good Lucks!

\_\_\_ 25. **M'burg Peacock at Urn chop plate - amethyst - super rare & beautiful plate, very few known, a great opportunity**

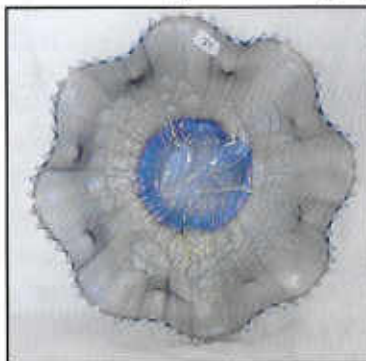




\_\_\_ 26. Persian Medallion 10" IC shaped bowl - blue - fantastic



\_\_\_ 33. M'burg Whirling Leaves crimped edge ruffled bowl-green - radium & super, first of many odd shaped M'burg pieces coming up



\_\_\_ 34. Peacocks ruffled bowl w/ribbed back - powder blue opal - super rare bowl & nice



\_\_\_ 27. Stippled Peacocks PCE bowl w/ribbed back - aqua opal - fabulous irid. on this extremely rare bowl, especially when stippled, (was super hard to photo and is much nicer than pics)

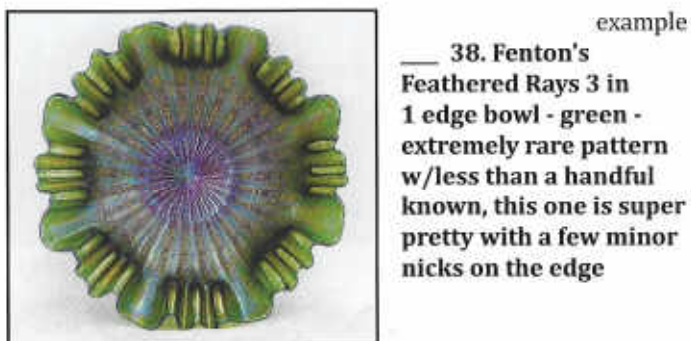
\_\_\_ 35. Peacocks ruffled bowl w/ribbed back - smoke - super neat bowl in a true smoke color, pretty irid.



\_\_\_ 36. Peacocks ruffled bowl w/ribbed back - aqua - another scarce color, very pretty

\_\_\_ 37. Peacocks ruffled bowl w/ribbed back - ice green - very pretty

\_\_\_ 28. Stork & Rushes w/Lattice Band ftd bonbon- marigold - I have never seen this before, did not know this existed! chip on base



example  
\_\_\_ 38. Fenton's Feathered Rays 3 in 1 edge bowl - green - extremely rare pattern w/less than a handful known, this one is super pretty with a few minor nicks on the edge



\_\_\_ 29. Farmyard 8 ruffled bowl - purple - super rare & nice

\_\_\_ 30. N's Thin Rib 10" vase - sapphire - pastel version and very pretty

\_\_\_ 31. N's Thin Rib 9 1/2" vase - sapphire - pretty irid. on this vase

\_\_\_ 39. Lattice & Poinsettia ftd ruffled bowl w/ribbed back - aqua opal - an extreme rarity, highly desirable and nice



\_\_\_ 32. Frolicking Bears whimsy ruffled hat shape - green - made from the ultra-rare tumbler, only one I have ever heard of, great



piece!! has minor peeling spot on edge but who cares?



\_\_\_ 41. Beaded Cable  
whimsey rose bowl - blue  
- this was never turned in  
but flared straight up, has  
pinpoint on top edge and  
roughness on one foot,  
super neat piece!



\_\_\_ 42. M'burg Whirling  
Leaves square shaped  
crimped edge bowl - green -  
radium & nice

\_\_\_ 43. M'burg Whirling Leaves square shaped crimped edge  
bowl - marigold - radium & beautiful



\_\_\_ 44. Stippled Three  
Fruits 9" plate w/  
ribbed back - lime  
green w/marigold  
overlay - absolutely  
super plate in this rare  
color!

\_\_\_ 45. Stippled  
Three Fruits 9" plate  
w/ribbed back -  
horehound - fantastic  
irid. on another rare  
plate



\_\_\_ 46. Stippled Three  
Fruits 9" plate w/ribbed  
back - purple - nice

\_\_\_ 47. Circle Scroll 7"  
vase - purple - super



\_\_\_ 48. Holly ruffled bowl - ice green - extremely rare  
color & super pretty, many have poor irid., this  
one does not

\_\_\_ 49. Holly ruffled bowl - celeste blue - another beauty  
w/stretch irid., a dandy

\_\_\_ 50. Holly ruffled bowl - blue opal - very, very pretty for  
this rare bowl

\_\_\_ 51. Holly ruffled bowl - marigold on moonstone - also  
very pretty in a scarce color



\_\_\_ 52. Diamond Rib 21" funeral  
vase - green - rare & pretty, has  
peeling effect on top of 3 points

\_\_\_ 53. Diamond Rib 9" ruffled  
top jardinière - green - this has  
significant damage but is super  
neat, has cracks and one ruffle is  
damaged, a great shelf whimsey!

\_\_\_ 54. Diamond Rib 16 1/2"  
funeral vase - marigold - a  
dandy, pretty & rare

\_\_\_ 55. Diamond Rib  
6 1/2" jardinière -  
amethyst - very rare &  
unusual to find piece

\_\_\_ 56. M'burg Whirling  
Leaves tri-cornered  
crimped edge bowl -  
green - radium, nice  
& scarce



\_\_\_ 57. M'burg Whirling  
Leaves tri-cornered crimped edge bowl - marigold - radium &  
super, probably the rarest color



\_\_\_ 58. N's  
Peacock at  
Urn chop  
plate - ice  
green - a top  
Northwood  
rarity,  
another rare  
opportunity,  
yes, it is nice!

\_\_\_ 59. Scroll  
Embossed 9"  
plate - purple -  
super

\_\_\_ 60. Hearts &  
Flowers whimsey  
compote - white -  
another super cool  
whimsey, the top is  
flattened out and  
not ruffled







\_\_\_ 61. Hearts & Flowers ruffled compote - marigold on custard - super pretty & very rare, as nice as they get

\_\_\_ 62. Hearts & Flowers ruffled compote - green - a beauty for this scarce color

\_\_\_ 63. Hearts & Flowers ruffled compote - aqua opal - nice

\_\_\_ 64. Butterfly & Berry water pitcher - blue - this is beautiful!



\_\_\_ 68. Peacock at the Fountain 8 pc. punch set - marigold - dark, pretty

\_\_\_ 69. Stag & Holly giant rose bowl - blue - very rare & super

\_\_\_ 70. Garden Path Variant chop plate - purple - a Dugan classic that is absolutely beautiful, another WOW



\_\_\_ 71. Vintage IC shaped sauce - celeste blue - super pretty w/ stretchy irid., quite rare



\_\_\_ 72. Leaf Chain 9" plate - green - it's wonderful! they usually don't look like this, a rare opportunity

\_\_\_ 73. Leaf Chain 9" plate - blue - another beauty

\_\_\_ 74. Leaf Chain 9" plate - marigold - dark, nice

\_\_\_ 75. Leaf Chain 9" plate - pastel marigold - pretty w/lots of pinks and yellows



\_\_\_ 65. Embroidered Mums PCE bowl w/ribbed back - sapphire - super rare color, highly desirable

\_\_\_ 66. Embroidered Mums PCE bowl w/ ribbed back - blue - electric & nice, extremely rare in this color

\_\_\_ 67. Peacock at the Fountain punch bowl & 6 cups - white - rare punch set, missing base



\_\_\_ 76. M'burg Peacock at Urn Mystery bowl - blue - super rare color, satin & pretty





\_\_\_ 77. Drapery Variant 9" vase - sapphire - pretty irid. on this scarce color

\_\_\_ 78. Good Luck PCE bowl w/ribbed back - aqua opal - a fantastic bowl! super pretty, has typical webbing spots between points

\_\_\_ 79. Good Luck PCE bowl w/ribbed back - purple - pretty

\_\_\_ 80. Good Luck PCE bowl w/ribbed back - amethyst - pretty, many would call lavender

\_\_\_ 81. M'burg Whirling Leaves crimped edge bowl - green - slightly egg shaped, neat shape w/fantastic radium irid.



\_\_\_ 82. M'burg Whirling Leaves crimped edge bowl - amethyst - slightly egg shaped, radium & pretty, a great pair



\_\_\_ 83. Rustic 20" funeral vase w/plunger base - blue - super pretty & very scarce

\_\_\_ 84. Rustic 21" funeral vase w/plunger base - amethyst - very tall for these, nice irid.

\_\_\_ 85. Rustic 18" funeral vase w/plunger base - blue - very neat vase, color is beautiful, slight bruises on base

\_\_\_ 86. Rose Show 9" plate - lime green opal - many call these ice green opal, not matter what, they are rare & beautiful

\_\_\_ 87. Rose Show 9" plate - emerald green - rare color, nice, pinpoint on one rose

\_\_\_ 88. Rose Show 9" plate - purple - nick on rose



\_\_\_ 89. Rose Show 9" plate - blue - nice, chip on base

\_\_\_ 90. Rose Show 9" plate - marigold - dark & super

\_\_\_ 91. Rose Show 9" plate - marigold - pastel & nice



\_\_\_ 92. M'burg Rose Columns vase - green - super pretty example, very rare & highly desirable

\_\_\_ 93. Drapery 5" round berry sauce - white - rare piece, nice

\_\_\_ 94. Embroidered Mums ruffled bowl w/ribbed back - lime green opal - extremely rare color, very few known, has the pigment in the glass like they all do



\_\_\_ 95. Embroidered Mums ruffled bowl - aqua - rare color, nice

\_\_\_ 96. Embroidered Mums ruffled bowl - lavender - super pretty

\_\_\_ 97. Embroidered Mums ruffled bowl w/ribbed back - blue - electric, super



\_\_\_ 98. Embroidered Mums ruffled bowl w/ribbed back - amethyst - super pretty

\_\_\_ 99. Embroidered Mums ruffled bowl w/ribbed back - marigold - dark, nice





\_\_\_ 100. Butterfly & Tulip ftd square shaped bowl - purple - a beauty for this collector's classic

\_\_\_ 101. Peacock & Grape IC shaped bowl - peach opal - pretty example

\_\_\_ 102. Peacock & Grape IC shaped bowl - amethyst - very pretty



\_\_\_ 108. Stippled Three Fruits ruffled bowl w/ ribbed back - sapphire - another wonderful piece of glass

\_\_\_ 109. Stippled Three Fruits ruffled bowl w/ ribbed back - white - very pretty example

\_\_\_ 110. M'burg Peacock master berry bowl - green - radium, super

\_\_\_ 103. M'burg Wild Flower ruffled compote - marigold - radium & wonderful, a great Millersburg piece!



\_\_\_ 104. N's Grape & Cable lg size ftd orange bowl - purple - very pretty

\_\_\_ 111. M'burg Peacock master berry bowl - amethyst - radium & fantastic, this is a dandy!

\_\_\_ 112. M'burg Peacock berry sauce - amethyst - radium, super

\_\_\_ 113. Big Basketweave 9 1/2" vase - ice blue - very rare color, pretty

\_\_\_ 114. Big Basketweave 9" vase - purple - super

\_\_\_ 115. Big Basketweave 12" vase - lavender - super

\_\_\_ 116. Orange Tree w/ Trunk 9" plate - yellow - very rare color & pretty, few opportunities to own a yellow piece of Carnival Glass



\_\_\_ 117. Orange Tree w/ Trunk 9" plate - white - irid. is fantastic



\_\_\_ 105. M'burg Zig Zag square shaped crimped edge bowl - marigold - radium, dark & beautiful, rare



\_\_\_ 118. Good Luck ruffled bowl w/ribbed back - ice blue - dark color w/pretty irid., rare piece

\_\_\_ 119. Good Luck ruffled bowl w/ribbed back - aqua opal - butterscotch & nice, scarce

\_\_\_ 106. Grapevine Lattice tankard water pitcher - purple - super pretty & scarce, beautiful



\_\_\_ 107. Grapevine Lattice tankard water pitcher - marigold - nice

\_\_\_ 120. Good Luck ruffled bowl w/BW back - horehound - very pretty for these, scarce

\_\_\_ 121. Good Luck ruffled bowl w/ribbed back - green - pretty

\_\_\_ 122. Good Luck ruffled bowl w/ribbed back - purple - very pretty

\_\_\_ 123. Good Luck ruffled bowl w/ribbed back - blue - has electric highlights

\_\_\_ 124. N's Town Pump - marigold - dark & pretty from top to bottom, scarce





- \_\_\_ 125. Stippled Singing Birds mug - green - very rare mug, not often stippled in this color
- \_\_\_ 126. Grape & Cable 8 pc. midsize punch set - marigold - super nice
- \_\_\_ 127. Grape & Cable small size round punch bowl & base - marigold - dark & super



\_\_\_ 128. M'burg Hanging Cherries ruffled sauce - blue - rare color, has pretty satin irid.



\_\_\_ 129. Poppy Show ruffled bowl - purple - very pretty, chip on base

\_\_\_ 130. Poppy Show ruffled bowl - blue - scarce color, nice

\_\_\_ 131. Poppy Show ruffled bowl - marigold - nice example

\_\_\_ 132. Rustic 16" funeral vase - white - frosty & pretty, rare & desirable

\_\_\_ 133. Rustic 17" funeral vase - green - super pretty, rare & desirable

\_\_\_ 134. Rustic 17" funeral vase - marigold - tiny bruise on top edge of base

\_\_\_ 135. M'burg Peacock crimped edge round bowl - green - radium - pretty, neat shape



\_\_\_ 136. Fenton's Vintage 10" ftd whimsy chop plate - blue - extremely rare, made from the fernery

\_\_\_ 137. Fenton's Vintage 10" ftd whimsy chop plate - amethyst - extremely rare, made from the fernery, spot of missing irid. on back of plate



\_\_\_ 138. N's Good Luck prototype 9" plate w/ BW back - marigold - extremely rare, especially in the plate, believed to be only one or two known, similar pattern to the Jockey Club advertising piece, super nice

\_\_\_ 139. Peacocks 9" plate w/ribbed back - blue - nice

\_\_\_ 140. N's Stippled Rays deep ruffled bowl - ice blue - very rare bowl, not many of these around!

\_\_\_ 141. N's Stippled Peacock at Urn ruffled bowl - marigold - made from IC bowl, scarce & pretty

\_\_\_ 142. M'burg Whirling Leaves IC shaped bowl - green - radium & super, another neat bowl

\_\_\_ 143. M'burg Whirling Leaves IC shaped bowl - marigold - radium & super also, may be the rarest color



\_\_\_ 144. Wishbone & Spades chop plate - purple - very pretty example of this scarce plate

\_\_\_ 145. Wishbone tri-cornered ftd bowl - green - scarce, small pinpoint on point



\_\_\_ 146. Wishbone tri-cornered ftd bowl - marigold - also scarce & nice

\_\_\_ 147. Peacock Tail breakfast sugar bowl - green - only one I have seen, very cool piece





\_\_\_ 148. Imperial Flute water pitcher & 3 tumblers - blue - extremely rare pitcher in this color, tumblers all have minor nicks



- \_\_\_ 149. Imperial Flute 6 pc. water set - purple - super pretty set, 2 tumblers have minor nicks  
 \_\_\_ 150. Stippled Good Luck PCE bowl w/ribbed back - blue - very nice  
 \_\_\_ 151. Stippled Good Luck PCE bowl w/ribbed back - marigold - dark, nice  
 \_\_\_ 152. Stippled Good Luck PCE bowl w/ribbed back - pastel marigold - pretty



\_\_\_ 153. Wishbone 10" ruffled bowl - sapphire - very rare color for these & super pretty

\_\_\_ 154. Dugan's Paneled Tree Trunk 8 1/2" squatty vase - purple - this vase is extremely rare,

has large crack from top to bottom, great shelf piece

\_\_\_ 155. Tree Trunk elephant's foot 12" vase - custard with blue stain - very rare, one ruffled broken, not iridized

\_\_\_ 156. Lustre Rose whimsy flared tumbler - powder blue - neat whimsy, has hard to see crack around base

\_\_\_ 157. Tree Trunk 19" funeral vase - green - maybe the prettiest green vase I have seen, has crack near top edge

\_\_\_ 158. Tree Trunk 19" funeral vase - purple - very scarce, very nice



\_\_\_ 159. Orange Tree w/ Trunk IC shaped bowl - yellow - another rare yellow piece w/pretty irid.



- \_\_\_ 160. Orange Tree IC shaped bowl - green - super pretty, very scarce to find a green pretty  
 \_\_\_ 161. Orange Tree IC shaped bowl - blue - pretty  
 \_\_\_ 162. Orange Tree IC shaped bowl - white - nice  
 \_\_\_ 163. Orange Tree IC shaped bowl - marigold - pretty

\_\_\_ 164. Rose Show ruffled bowl - lime green opal - very hard to find bowl & nice

\_\_\_ 165. Rose Show ruffled bowl - green - super pretty example, scarce color

\_\_\_ 166. Rose Show ruffled bowl - aqua opal - has butterscotch irid., base has opaque color to



\_\_\_ 167. Stork & Rushes ruffled punch bowl & base - marigold - rare to find these ruffled, nice

\_\_\_ 168. Captive Rose 9" plate - green - super beautiful

\_\_\_ 169. Captive Rose 9" plate - amethyst - maybe as nice as we have sold

- \_\_\_ 170. Captive Rose 9" plate - blue - a stunning example  
 \_\_\_ 171. M'burg Zig Zag tri-cornered crimped edge bowl - marigold - radium & nice, rare

\_\_\_ 172. Cherry Chain 10" IC shaped bowl - blue - fantastic!  
 \_\_\_ 173. N's Banded Grape & Cable banana boat - pearlized custard - rare

\_\_\_ 174. M'burg Ohio Star vase - marigold - rare vase, pretty

\_\_\_ 175. Fenton's Peacock at Urn 9" plate - blue - electric & nice

\_\_\_ 176. Fenton's Peacock at Urn 9" plate - marigold - dark, nice

\_\_\_ 177. Grape & Cable dresser tray - green - pretty

\_\_\_ 178. Grape & Cable pin tray - green - pretty

\_\_\_ 179. Grape & Cable powder jar - green - super nice example

\_\_\_ 180. Pair of Grape & Cable cologne bottles - green - nice matching pair







- \_\_\_ 181. Grape & Cable hatpin holder - green - very pretty
- \_\_\_ 182. Holly 9" plate - blue - super pretty, has "G&P" etching on face
- \_\_\_ 183. Unusual Flute type 9" tankard pitcher - green - fantastic irid., you would have to call this emerald, we have sold a marigold version of this which was the only other one we have seen, a great pitcher!!

- \_\_\_ 198. Ripple 15" vase - smoke - has 4" base, pretty



- \_\_\_ 199. Butterfly & Berry whimsy 3 3/4" pinched in vase - marigold - made from the tumbler, super neat, has large chip on base
- \_\_\_ 200. Fenton's Peacock at Urn ruffled bowl - green - very pretty
- \_\_\_ 201. Fenton's Peacock at Urn ruffled bowl - blue - unusual radium type irid.

- \_\_\_ 184. Panther ftd ruffled master berry bowl - blue - pretty
- \_\_\_ 185. Dandelion Knights Templar mug - ice blue - super pretty for these
- \_\_\_ 186. Dandelion Knights Templar mug - ice green - very pretty irid. for these



- \_\_\_ 187. Dandelion mug - marigold - dark, nice
- \_\_\_ 188. Grape & Cable fernery - pearlized custard - very rare item
- \_\_\_ 189. Grape & Cable fernery - custard w/blue stain - not iridized, quite rare
- \_\_\_ 190. Stippled Good Luck 9" plate w/ribbed back - blue - scarce, pretty
- \_\_\_ 191. Stippled Good Luck 9" plate w/ribbed back - marigold - pretty, nick on top cleat of horseshoe
- \_\_\_ 192. Beaded Bullseye 10 1/2" vase - purple
- \_\_\_ 193. Leaf Chain 6 ruffled bowl - teal green - very nice
- \_\_\_ 194. Leaf Chain 8 ruffled bowl - blue - very pretty
- \_\_\_ 195. Ten Mums CRE bowl - blue - nice
- \_\_\_ 196. M'burg Many Stars 3 in 1 edge bowl w/6 pt star - marigold - radium, dark & pretty, scarce

- \_\_\_ 202. Wild Berry powder jar - marigold - has N.Y. souvenir adv. that we can't quite read
- \_\_\_ 203. M'burg Zig Zag crimped edge ruffled bowl - green - radium & very pretty, scarce



- \_\_\_ 204. Memphis 8 pc. punch set - white - very rare & desirable
- \_\_\_ 205. Memphis punch bowl & base - green - scarce
- \_\_\_ 206. Miniature Chesterfield salt - marigold - has Imperial Cross Mark on base



- \_\_\_ 197. N's Peacock at the Fountain fruit bowl - renninger blue - very rare color, very pretty, not many opportunities for these



- \_\_\_ 207. Stippled Grape & Cable ruffled bowl w/ribbed back - ice green - rare bowl w/very pretty irid.
- \_\_\_ 208. Stippled Grape & Cable Variant ruffled bowl w/ribbed back - sapphire - scarce color, pretty
- \_\_\_ 209. Stippled Grape & Cable Variant ruffled bowl w/ribbed back - green - very pretty
- \_\_\_ 210. Stippled Grape & Cable Variant ruffled bowl w/ribbed back - marigold - dark & fantastic
- \_\_\_ 211. Morning Glory 16 1/2" funeral vase - purple - super pretty



- \_\_\_ 212. M'burg Little Stars 10" IC shaped bowl - green - very hard to find bowl, satin, tiny pinpoint on base
- \_\_\_ 213. Vintage 9" ruffled bowl - marigold - dark, pretty
- \_\_\_ 214. E.A. Hudson Co. 6" plate - amethyst - very pretty, scarce
- \_\_\_ 215. Scroll Embossed deep ruffled bowl - emerald green - scarce
- \_\_\_ 216. Diamond Lace 7 pc. water set - purple - super pretty set



\_\_\_ 217. Good Luck prototype PCE bowl w/ BW back - marigold - another great rarity, only know of a couple of these, again, similar to the Jockey Club

- \_\_\_ 218. Vintage whimsy ftd ruffled bowl - amethyst - made from the fernery, nice
- \_\_\_ 219. Sailboat ruffled sauce - brick red

\_\_\_ 220. Fenton's Grape & Cable centerpiece bowl - blue - made from the fruit bowl, missing irid. in center, rare shape



\_\_\_ 221. M'burg Nesting Swan square shaped crimped edge bowl - green - radium, a dandy piece

- \_\_\_ 222. Ski Star tri-cornered dome ftd bowl - peach opal
- \_\_\_ 223. Stippled Good Luck ruffled bowl w/ribbed back - blue - electric & nice
- \_\_\_ 224. Stippled Good Luck ruffled bowl w/ribbed back - green - rare color to find stippled, pretty



\_\_\_ 225. Stippled Good Luck ruffled bowl w/ ribbed back - marigold - covered with pink irid.

- \_\_\_ 226. Stippled Good Luck ruffled bowl w/ ribbed back - marigold
- \_\_\_ 227. Stippled Good Luck ruffled bowl w/ ribbed back - pastel marigold - very nice

- \_\_\_ 228. Tree Trunk 10" vase - sapphire - scarce, nice
- \_\_\_ 229. Tree Trunk 10" vase - renninger blue - rare color, has manufacture open bubble on base
- \_\_\_ 230. Tree Trunk 12" vase - green - pretty
- \_\_\_ 231. Fenton's Grape & Cable ruffled ftd fruit bowl w/ Persian Medallion interior - green - nice

\_\_\_ 232. Fenton's Grape & Cable 5 pc. fruit set - marigold - all have Persian Medallion interior, master bowl is super

\_\_\_ 233. Stippled Strawberry 9" plate w/BW back - green - scarce, nice

\_\_\_ 234. M'burg Grape Wreath Variant 10" tri-

- cornered bowl - marigold - radium, dark & pretty, rare bowl
- \_\_\_ 235. Carnival Hobstar butter dish - purple - minor pinpoint on knob
- \_\_\_ 236. M'burg Peacock at Urn 3 in 1 edge Mystery bowl - green - radium, nice



\_\_\_ 237. Vintage 9" IC shaped bowl - amethyst - super radium type irid.

\_\_\_ 238. Leaf & Beads rose bowl w/smooth top - pearlized custard - very scarce

\_\_\_ 239. Singing Birds water pitcher - green - very pretty

\_\_\_ 240. Singing Birds 7 pc. water set - marigold - 2 tumblers have nicks

\_\_\_ 241. Stippled Three Fruits PCE bowl w/ribbed back - green - scarce color, nice

\_\_\_ 242. M'burg Rosalind 9" IC shaped bowl - green - satin, very nice, scarce size



- \_\_\_ 243. Drapery 8" vase - aqua - scarce color, has tiny nick on one foot
- \_\_\_ 244. Drapery 7" vase - marigold
- \_\_\_ 245. Stippled Grape & Cable 9" plate w/BW back - green - scarce
- \_\_\_ 246. Stippled Grape & Cable 9" plate w/ribbed back - marigold - scarce plate, dark, nice
- \_\_\_ 247. M'burg Nesting Swan ruffled bowl - green - radium, pretty
- \_\_\_ 248. M'burg Nesting Swan ruffled bowl - marigold - radium, pretty
- \_\_\_ 249. M'burg Four Pillars 13 1/2" vase - green - has star in base



\_\_\_ 250. Wishbone ftd ruffled bowl - sapphire - super pretty for this rare color

- \_\_\_ 251. Wishbone ftd ruffled bowl - horehound - another hard color to find, pretty
- \_\_\_ 252. Wishbone ftd ruffled bowl - green - nice
- \_\_\_ 253. Wishbone ftd ruffled bowl - marigold - nice



\_\_\_ 254. Orange Tree whimsy ruffled punch bowl & base - blue - extremely rare to find in this shape, very small eraser size bruise on inside of bowl

\_\_\_ 255. Orange Tree ruffled punch bowl & base - blue - very nice

\_\_\_ 256. Stippled Peacocks ruffled bowl w/ ribbed back - marigold - very pretty

\_\_\_ 257. Peacock & Grape 9" plate - blue - pretty example, quite scarce



- \_\_\_ 258. Peacock & Grape 9" plate - marigold - pastel & pretty
- \_\_\_ 259. M'burg Holly Whirl ruffled bowl - green - radium & super, small chip on backside of point
- \_\_\_ 260. N's Thin Rib midsize 14" vase - blue - super nice
- \_\_\_ 261. N's Thin Rib midsize 11 1/2" vase - marigold - short & squatty for these
- \_\_\_ 262. Ten Mums 10" ruffled bowl - green - very pretty, small rub on sharp point
- \_\_\_ 263. M'burg Courthouse ruffled bowl - amethyst - radium, nice



\_\_\_ 264. Persian Medallion 9" plate - green - very rare plate & pretty, not more than a handful known

\_\_\_ 265. Persian Medallion 9" plate - white - another rare & pretty plate

\_\_\_ 266. Windmill 8" round bowl - emerald green - scarce color, pretty

- \_\_\_ 267. N's Stippled Rays 10" ruffled bowl - purple
- \_\_\_ 268. Stippled Grape & Cable PCE bowl w/ribbed back - lime green - rare color & pretty, pinpoint on point
- \_\_\_ 269. Little Flowers large size deep round bowl - blue - super pretty
- \_\_\_ 270. Coin Dot 3 in 1 edge 9" bowl - peach opal - very scarce

\_\_\_ 271. Heart & Vine 9" plate - blue - has pretty green irid.

- \_\_\_ 272. Heart & Vine 9" plate - amethyst - scarce
- \_\_\_ 273. Fruits & Flowers bonbon w/plain back - purple - very unusual, they normally have basket weave on the outside



\_\_\_ 274. M'burg Gay Nineties tumbler - amethyst - very rare & nice



\_\_\_ 275. Pearly Dots ruffled compote - marigold on milk glass

\_\_\_ 276. Memphis 8 pc. fruit bowl set - purple - nice - one cup has chip on base

\_\_\_ 277. M'burg Primrose deep round bowl - green - radium, nice

- \_\_\_ 278. Four Seventy Four milk pitcher - lavender - scarce color
- \_\_\_ 279. Peacock & Grape ruffled bowl - green - pretty
- \_\_\_ 280. Peacock & Grape ruffled bowl - blue - pretty
- \_\_\_ 281. Peacock & Grape ruffled bowl - marigold



\_\_\_ 282. Blackberry Block tankard water pitcher w/1 tumbler - green - scarce color, nice



\_\_\_ 283. Grape & Cable candlesticks - marigold - nice



\_\_\_ 284. Concord 9" plate - green - a fantastic example, beautiful

\_\_\_ 285. Concord 9" plate - amethyst - very scarce

\_\_\_ 286. Diamond Point 9 1/2" vase - renninger blue - rare color for these, not often seen

\_\_\_ 287. Diamond Point 9" vase - marigold - super

\_\_\_ 288. Orange Tree hatpin holder - blue - normal pinpoint on foot

\_\_\_ 289. Peacocks PCE bowl w/ribbed back - green - scarce, nice

\_\_\_ 290. M'burg Strawberry Wreath 7" tri-cornered bowl - marigold - radium, nice

\_\_\_ 291. Persian Garden fruit bowl top - purple - fantastic irid., someone needs to find a pretty base for this

\_\_\_ 292. Hearts & Flowers PCE bowl w/ribbed back - lime green - scarce color, nice

\_\_\_ 293. Hearts & Flowers PCE bowl w/ribbed back - custard - not Carnival Glass



\_\_\_ 294. Wide Panel 9" round bowl - red - Stretch, has "Hostettters Center Square Greencastle, PA " original partial paper label

\_\_\_ 295. Ripple 8 1/2" vase - purple - has 3 3/8" base, super

\_\_\_ 296. Grape & Cable Variant 9" plate w/BW back - green - super pretty

\_\_\_ 297. Grape & Cable Variant 9" plate w/BW back - olive green - scarce color

\_\_\_ 298. Milady tankard water pitcher - marigold - scarce, nice

\_\_\_ 299. M'burg Peacock at Urn 3 in 1 edge 10" bowl - green - radium, small chips on base, chip on edge

\_\_\_ 300. Stippled Peacocks 9" plate w/ribbed back - marigold - pretty

\_\_\_ 301. Hearts & Flowers ruffled bowl w/ribbed back - purple - also very pretty

\_\_\_ 302. M'burg Holly Whirl deep round bowl - green - radium, nice

\_\_\_ 303. Basketweave Open Edge ruffled basket - red

\_\_\_ 304. Holly IC shaped bowl - green

\_\_\_ 305. Three Fruits Medallion spt ftd ruffled bowl - purple - pretty

\_\_\_ 306. Rose Show Variant 9" plate - marigold - very pretty, minor rub on point

\_\_\_ 307. Banded Grape & Cable turned in centerpiece bowl - pearlized custard - very rare piece, not many around

\_\_\_ 308. M'burg Peacock 10" crimped edge ruffled bowl - green - radium, nice



\_\_\_ 309. Poppy Show 9" plate - marigold - always in demand

\_\_\_ 310. Rose Show Variant ruffled bowl - blue - very pretty, hard to find

\_\_\_ 311. Imperial Grape 6" plate - amber - pretty

\_\_\_ 312. Peacock at the Fountain water pitcher - white - pretty irid., scarce

\_\_\_ 313. Springtime spooner - purple - super pretty

\_\_\_ 314. Old Rose Distilling / Stippled Grape & Cable Variant 9" plate w/ribbed back - green - very pretty for these

\_\_\_ 315. Lot of 3 Four Flowers round saucers - purple - all 3 pretty

\_\_\_ 316. M'burg Little Stars 7" ruffled bowl - amethyst - satin, nice







\_\_\_ 317. Cherry Chain chop plate - marigold - dark & super, hard to find

\_\_\_ 318. Persian Medallion 3 in 1 edge 10" bowl - green - pretty

\_\_\_ 319. Peacock at the Fountain creamer - purple - nice

\_\_\_ 320. N's Stippled Peacock at Urn master IC bowl - marigold - fantastic, dark pumpkin irid.



\_\_\_ 321. M'burg Peacock IC shaped sauce - green - radium, very nice



\_\_\_ 322. Thistle 9" plate - green - super pretty, rare plate

\_\_\_ 323. Thistle 9" plate - amethyst - nice, rare plate

\_\_\_ 324. M'burg Holly Sprig 8" IC shaped bowl - green - radium, nice

\_\_\_ 325. M'burg Trout & Fly ruffled bowl - lavender - satin, fantastic! fish is completely covered with irid., WOW!! one of Jim's favorites (Photo right)

\_\_\_ 326. Memphis large punch bowl & base - crystal - not Carnival Glass, has tiny nick on base of bowl

\_\_\_ 327. Memphis 11" square shaped bowl - crystal - not Carnival Glass



\_\_\_ 328. Memphis 12" chop plate - crystal - not Carnival Glass

\_\_\_ 329. Memphis 12" turned in stemmed rose bowl - crystal - not Carnival Glass

\_\_\_ 330. Memphis 12" spittoon shaped stemmed rose bowl - crystal - not Carnival Glass, has some lime deposit inside bowl

\_\_\_ 331. Memphis toothpick - crystal - not Carnival Glass

\_\_\_ 332. M'burg Ohio Star tulip top large punch bowl & base - crystal - not Carnival Glass

\_\_\_ 333. Diamond Point bushel basket - crystal - has yellow stain, not Carnival Glass

\_\_\_ 334. Diamond Point bushel basket - crystal - not Carnival Glass

\_\_\_ 335. Oriental Poppy 7 pc. tankard water set - blue w/gold decoration - not Carnival Glass

\_\_\_ 336. Oriental Poppy 7 pc. tankard water set - green w/gold decoration - not Carnival Glass

\_\_\_ 337. Absentee Oriental Poppy tankard water pitcher - crystal - not Carnival Glass, this is the Northwood blank

\_\_\_ 338. Twigs 7" vase - vaseline opal - not Carnival Glass

\_\_\_ 339. Twigs 7" vase - white opal - not Carnival Glass

\_\_\_ 340. Twigs 4 1/2" vase - vaseline opal - not Carnival Glass

\_\_\_ 341. Twigs 4 1/2" vase - green opal - not Carnival Glass

\_\_\_ 342. Twigs 4 1/2" vase - blue opal - not Carnival Glass

\_\_\_ 343. Twigs 4 1/2" vase - white opal - not Carnival Glass

\_\_\_ 344. N's Bushel Basket - green opal - not Carnival Glass

\_\_\_ 345. Twigs 4" pinched in vase - vaseline opal - not Carnival Glass

\_\_\_ 346. Twigs 4" pinched in vase - blue opal - not Carnival Glass

\_\_\_ 347. Twigs 4" pinched in vase - white opal - not Carnival Glass

\_\_\_ 348. Stippled & Banded Grape & Cable orange bowl - custard w/nutmeg stain - not Carnival Glass

\_\_\_ 349. Stippled Grape & Cable ruffled fruit bowl - custard w/nutmeg stain - not Carnival Glass

\_\_\_ 350. Stippled & Banded Grape & Cable dresser tray - custard w/nutmeg stain - not Carnival Glass

\_\_\_ 351. Stippled & Banded Grape & Cable hatpin holder - custard w/nutmeg stain - not Carnival Glass



# Carnival Glass Online Only 2021 Auction

SAT., APRIL 24 9:30 A.M.

COLUMBIA CLUB  
551 SOUTH TAFT AVE  
MASON CITY, IOWA 5040



126.



154.

The Reyan Collection

Seeck Auctions

Jim & Jan Seeck  
641-424-1116

182. 165. 169. 140.

57. 40. 42. 50. 51.

13. 36.

53. 113. 84. 30. 156.

208. 239. 326. 214.