

The Late
Melphia &
Rabon Hall
Collection



Heart of America
Carnival Glass
Association
Convention

Open
to the Public

Kansas City,
Missouri
Embassy Suites
Airport Hotel

Carnival Glass 2023 Auction

Saturday, April 15, 9:30 a.m.



Seeck Auctions
Jim & Jan Seeck
641-424-1116



MATTHEW WRODA
AUCTIONS
937-548-7835



Jim & Jan Seeck
641-424-1116

SATURDAY, APRIL 15, 2023 — 9:30 a.m.

Matthew Wroda
937-548-7835

Embassy Suites Airport Hotel — Kansas City, Mo.

7640 NW Tiffany Springs Parkway

FRIDAY PREVIEW

★ **ABSENTEE and LIVE BIDDING is available on-line through Auction Flex at: www.seeckauction.com**

★ **NO BUYER'S PREMIUM -**

EMAILS: jimjan@seeckauction.com matthew@matthewwrodaauctions.com jim@matthewwrodaauctions.com

The late Melphia and Rabon Hall Collection

Seeck Auctions in cooperation with Matthew Wroda Auctions is pleased to present the late Melphia and Rabon Hall Carnival Glass collection at auction. Melphia and Rabon were long time, serious collectors of Carnival Glass and enjoyed pursuing the rarities to add to their collection. They loved all makers, shapes and colors. There is something for everyone in this auction. This auction is an estate and will be sold absolute and without reserves.

Don't forget: Contemporary Carnival, Studio and Art Glass Online Only Auction #238 – Ends Thursday evening, April 13 beginning at 7 pm CST.

LODGING

Reservations can be made by calling the hotel directly at 816-891-7788. Ask for reservations and mention the HOACGA Convention. If you have a problem or questions about reservations at the hotel or questions about the convention, please email President Gary Sullivan at: stevenandgary@cox.net

Visit the Heart of America Carnival Glass Association on the Internet at: WWW.HOACGA.COM

Terms: Cash or Check, VISA, MasterCard and Discover accepted w/proper ID. 4% Clerking Fee on all purchases made using credit cards. Announcements made day of sale take precedence over any printed information.

ABSENTEE BIDDING OPTIONS

- 1) **Call us by phone at: Jim and Jan at (641) 424-1116 Matthew Wroda / Jim Wroda 937-548-7835**
- 2) **Prebid: Enter your bids from our website into our online catalog through the Auction Flex system.**
 - *An exciting advantage of entering your bids online yourself, is the option to be notified by email if you are outbid on an item. You will know when you are outbid on an item and you can increase your bid on that item or bid on something else.*
- 3) **Live Phone Bidding: Is available on pieces with an estimated sale price of \$500 or more.**

If you would like to participate in live phone bidding, contact us by the **Thursday before the auction.**
- 4) **Real-time Bidding:** Bid live during the auction through Auction Flex live webcast bidding.

There is a \$7 handling charge for each successful bid. Shipping and insurance charges are additional.

Bidders will be notified by phone/email if their bid(s) are successful. This will be done 1 - 3 days after the auction.

BID INCREMENTS:

\$1 - \$100/\$5 \$100 - \$200/\$10 \$200 - \$700/\$25 \$700 - \$1,500/\$50

- ___ 1. Basketweave Open Edge square shaped basket - ice blue
- ___ 2. Basketweave Open Edge square shaped basket - ice green - nice
- ___ 3. Pastel Swan salt - peach opal
- ___ 4. Pastel Swan salt - purple - souvenir - B. Robinson - Millerstown, PA
- ___ 5. Pastel Swan salt - marigold
- ___ 6. Lot of 5 Pastel Swan salts - various colors - minor nick on tail of celeste blue - lavender is contemporary

- ___ 7. Daisy Web JIP CRE hat - purple - STUNNING, ELECTRIC IRID,!
- ___ 8. Daisy Web two sides up hat - marigold - scarce
- ___ 9. Daisy and Drape turned in vase - white - pretty irid.



- ___ 10. Acorn Burrs 8 pc. punch set - aqua opal - One of the top pieces of Carnival Glass. Fantastic quality & condition! Unbelievable!!! Only known perfect set!
- ___ 11. Acorn Burrs 10 pc. punch set - white - scarce and nice!
- ___ 12. Acorn Burrs 8 pc. punch set - green - nice set
- ___ 13. Acorn Burrs 8 pc. punch set - purple - very nice
- ___ 14. Acorn Burrs 12 pc. punch set - marigold - another beauty!



- ___ 15. Ribbon Tie 3 in 1 edge low bowl - red - one of less than a handful known, might be the rarest red piece!!

- ___ 16. Double Star 7 pc. water set - green - signed Near Cut

- ___ 17. Drapery candy dish - ice blue - pretty irid.



- ___ 18. M'burg Morning Glory tankard water pitcher - green - another extreme rarity! rarest color of the three colors known, great opportunity!
- ___ 19. M'burg Morning Glory tumbler - green - very hard to find and nice
- ___ 20. M'burg Morning Glory tankard water pitcher - amethyst - fantastic irid. on this rare pitcher, great piece!
- ___ 21. M'burg Morning Glory tumbler - amethyst - very nice
- ___ 22. M'burg Morning Glory tankard water pitcher - marigold - super example, even irid. from top to bottom, WOW!
- ___ 23. M'burg Morning Glory tumbler - marigold - nice, scarce
- ___ 24. M'burg Morning Glory tumbler - marigold - nice, scarce
- ___ 25. M'burg Morning Glory tumbler - marigold - nice, scarce
- ___ 26. M'burg Morning Glory tumbler - marigold - nice, scarce

- ___ 27. Pansy low ruffled bowl - smoke - pretty
- ___ 28. Pansy ruffled bowl - purple
- ___ 29. Rising Sun ftd 7 pc. water set - marigold - nice



___ 30. Goddess of Harvest 3 in 1 edge bowl - amethyst - super pretty & extremely rare as very few are known !WOW!

- ___ 31. Fine Cut and Roses candy dish - aqua opal - pretty, tiny nicks on feet
- ___ 32. Fine Cut and Roses candy dish - white

___ 33. Four Seventy Four 8 pc. punch set - emerald green - super rare & fantastic! a stunning set!



- ___ 34. Ski Star 7 pc. ruffled berry set - peach opal
- ___ 35. Concave Diamond 7 pc. lidded water set - celeste blue - nice



___ 36. Panther ftd master berry bowl - irid. Nile green - a top Fenton rarity! only two that I know of, very few opportunities for this piece, tiny, hard to see epoxy on one point, but Who Cares!!!



- ___ 37. Grape & Cable candlesticks - purple
- ___ 38. Poppy Show 9" plate - green - super, hard plate to find!
- ___ 39. Poppy Show 9" plate - ice blue - scarce

- ___ 40. Poppy Show 9" plate - marigold - super pretty
- ___ 41. Poppy Show 9" plate - white

___ 42. M'burg Trout and Fly whimsey four lobed bowl - vaseline - FANTASTIC marigold irid., beautiful coloring on this rare Millersburg piece!



- ___ 43. Beaded Cable rose bowl - aqua opal
- ___ 44. N's Dandelion tankard 7 pc. water set - ice blue - extremely rare set, very nice



- ___ 45. N's Dandelion tankard 7 pc. water set - white - another rare, beautiful set!
- ___ 46. N's Dandelion tankard 6 pc. water set - marigold - pretty
- ___ 47. Round Up IC shaped bowl - white - nice
- ___ 48. Little Flowers 10" ruffled bowl - red - super, a real beauty!
- ___ 49. Butterfly & Berry 4 pc. table set - marigold - butter dish base has chip on point and chip on rim of the sugar bottom

___ 50. Orange Tree with trunk 9" plate - aqua opal - one of two I know of, extremely rare Fenton plate, tiny manufacture heat check in base, another aqua opal dandy in this auction!



___ 51. Shell and Sand ruffled bowl - purple - super pretty



___ 52. Wisteria 7 pc. water set - ice blue - a fantastic and rare water set, don't miss it!

___ 53. Wisteria tumbler - ice blue - pretty

___ 54. Daisy Squares two sides up rose bowl - green - scarce

___ 55. Daisy Squares two sides up rose bowl - marigold - scarce

___ 56. M'burg Rose Columns vase - amethyst - a beauty, very scarce and desirable!



___ 57. M'burg Rose Columns vase - marigold - another beauty and top rarity!

___ 58. Peacock at the Fountain 6 pc. water set - white - pretty set

___ 59. Peacock at the Fountain 7 pc. water set - blue - beautiful set! irid. is wonderful

___ 60. Peacock at the Fountain 7 pc. water set - purple - nice, tumblers are Dugan

___ 61. Peacock at the Fountain 7 pc. water set - marigold - nice

___ 62. Diamond Rib 10" vase - white - nice

___ 63. S-Repeat 14 pc. punch set - purple - outstanding & very rare, a Dugan classic!



___ 64. Basketweave Open Edge JIP basket - red - nice

___ 65. Basketweave Open Edge JIP basket - green - nice

___ 66. Basketweave Open Edge JIP basket - marigold



___ 67. Vintage 10" ruffled bowl - red - very rare bowl, especially for this size, nice

___ 68. Enameled Forget Me Not 7 pc. tankard water set - marigold - pretty

___ 69. Embroidered Mums handled bonbon - white - rare bonbon, nice

___ 70. Butterfly and Tulip square shaped ftd bowl - purple - rare and nice! Little deeper than most!





___ 71. Loganberry vase - amber - scarce

___ 72. Grape & Cable 10 pc. master punch set - ice blue - very few opportunities to buy this fantastic set, don't miss out!!!

___ 73. Grape & Cable 12 pc. master punch set - purple a beautiful set

___ 74. Captive Rose ruffled compote - white - harder to find than you think

___ 75. Hearts & Flowers 9" plate w/rib back - lime green - rare color, nice



___ 77. Two Flowers large size ftd ruffled bowl - powder blue - very pretty

___ 78. Tree Trunk 18" funeral vase - purple - super example, a real beauty!

___ 79. Hearts & Flowers ruffled compote - lime green - scarce color and nice!

___ 80. Hearts & Flowers ruffled compote - ice blue - nice

___ 81. Hearts & Flowers ruffled compote - aqua opal - butterscotch irid.

___ 82. Hearts & Flowers ruffled compote - purple

___ 83. Hearts & Flowers ruffled compote - white

___ 84. Inverted Strawberry 7 pc. water set - amethyst - a Cambridge classic, rare & nice

___ 85. Good Luck 9" plate w/ BW back - green - pretty

___ 86. Good Luck 9" plate w/ribbed back - marigold - dark & super!

___ 87. Grape & Cable 4 pc. table set - purple

___ 88. Dragon & Lotus ruffled bowl - red - cherry red color and looks red



___ 76. Frolicking Bears water pitcher - bought as olive green but has more of a smokey color to it, no matter what color you call it, it's an extremely rare pitcher, chip on base



___ 89. Lily of the Valley 7 pc. tankard water set - blue - very rare set

___ 90. Beaded Cable rose bowl - aqua opal - butterscotch, nice

___ 91. Stippled Three Fruits 9" plate w/ribbed back - aqua opal - super plate w/great opal!

___ 92. N's Eight sided Bushel Basket - ice blue - scarce color



___ 93. Grape & Cable 7 pc. water set - ice green - Extremely rare to find a complete set. Everything about this set is rare. Tumblers are rare, Pitcher is rare. Great set!

___ 94. Grape & Cable water pitcher - smoke - rare color!

___ 95. Grape & Cable 7 pc. water set - purple



___ 96. Rose Show 9" plate - marigold on custard - rare plate, chip on rose

___ 97. Rose Show 9" plate - ice green opal - super rare, super pretty!

___ 98. Rose Show 9" plate - lime green - very rare plate & nice, used to call these vaseline years ago

___ 99. Rose Show 9" plate - ice green - scarce color

___ 100. Rose Show 9" plate - green - scarce color, nice

___ 101. Rose Show 9" plate - amethyst - scarce

___ 102. Rose Show 9" plate - blue - hard to find

___ 103. Rose Show 9" plate - marigold - dark, nice

___ 104. Peacock at the Fountain 8 pc. punch set - ice blue - an absolutely beautiful set w/ wonderful color & irid., so hard to find!



___ 105. Peacock at the Fountain 8 pc. punch set - ice green - another super matching set, one cup has bruise on base

___ 106. Peacock at the Fountain 8 pc. punch set - white - another beauty!!! Great irid!

___ 107. Peacock at the Fountain 8 pc. punch set - blue - pretty

___ 108. Peacock at the Fountain 8 pc. punch set - purple - scarce, nice

___ 109. Peacock at the Fountain 12 pc. punch set - marigold - pretty

___ 110. Miniature Morning Glory 5" vase - smoke - nice

___ 111. Miniature Morning Glory 5" vase - marigold



___ 112. Chrysanthemum 9" ruffled bowl - RED - super pretty example, not many of these look like this. Top Quality!

___ 113. Soda Gold 7 pc. water set - smoke - scarce, nice

___ 114. Soda Gold 7 pc. water set - marigold - minor heat check in base of pitcher



___ 115. Peacock at the Fountain ruffled compote - aqua opal - super example, with great opal! There is the tiniest of tiny needle point nip on the edge of base



___ 125. M'burg Big Fish crimped edge deep round bowl - vaseline - FANTASTIC!!! WOW! One of those pieces you just have to buy. ABSOLUTELY BEAUTIFUL!

___ 116. N's Wide Panel 12.5" funeral vase - marigold - 4.75" base

___ 117. Open Rose 9" plate - purple - absolutely incredible!!! this is an amazing plate!



___ 118. Grape & Cable orange bowl - white - very rare to find pastel orange bowls, some people call this the large fruit bowl

___ 119. Corn bottle - marigold - pinpoint on top of rim



___ 120. Oriental Poppy 5 pc. tankard water set - ice blue - very rare and desirable, dark color

___ 121. Oriental Poppy 7 pc. tankard water set - white - scarce, repaired spout

___ 122. Oriental Poppy 7 pc. tankard water set - purple - beautiful set

___ 123. Oriental Poppy 7 pc. tankard water set - marigold - crack in base

___ 124. Oriental Poppy tumbler - ice green - scarce

___ 126. Holly ruffled hat shape - red

___ 127. Blossomtime ruffled compote - purple

___ 128. N's Wide Panel epergne - white - very hard to find and beautiful, heat check in center lily

___ 129. Blackberry Spray CRE JIP hat shaped - aqua opal - super hard to find, nice

___ 130. Blackberry Spray CRE JIP hat shaped - amethyst

___ 131. Blackberry Spray CRE JIP hat shaped - green

___ 132. Grape & Cable 7 pc. tankard water set - purple - beautiful set!, one tumbler w/chip

___ 133. Grape & Cable 7 pc. tankard water set - marigold - another nice set



___ 134. Farmyard 8 ruffled bowl - purple - super pretty and highly desirable, great opportunity!

___ 135. Grape & Cable butter dish - green - nice

___ 136. Grape & Cable butter dish - purple - has epoxy around base

___ 137. Persian Medallion ruffled bowl - red - very hard to find, small chip on base

___ 138. Basketweave Open Edge large size banana boat shaped basket - ice green - nice



___ 139. M'burg Hobstar and Feather 10 pc. Tulip top punch set - amethyst - very rare set with few known

___ 140. Stag & Holly spatula ftd ruffled bowl - amethyst

___ 141. Peacocks PCE bowl w/ribbed back - ice blue / sapphire - super nice bowl that leans sapphire. You can make your own decision!! Pretty!



___ 142. Peacocks PCE bowl w/ribbed back - lime green - scarce color

___ 143. Peacocks PCE bowl w/plain back - white - pretty

___ 144. Grape Arbor 7 pc. tankard water set - white - polished around top edge

___ 145. Grape Arbor 7 pc. tankard water set - purple - pitcher is fabulous!

___ 146. Grape Arbor 7 pc. tankard water set - marigold pretty set



___ 147. Peter Rabbit IC shaped bowl - blue - scarce, pretty

___ 148. Daisy and Drape flared out vase - aqua opal - butterscotch, nice

___ 149. Peacock at the Fountain covered sugar bowl - blue - nice

___ 150. Peacock at the Fountain creamer - blue

___ 151. Peacock at the Fountain spooner - blue

___ 152. Orange Tree ruffled bowl - red - cherry red color, irid. is red. This is what everyone wants!!



___ 153. Grape & Cable Variant ruffled bowl w/plain back - purple



___ 154. Peacock at the Fountain ruffled fruit bowl - aqua opal - super pretty example w/ butterscotch irid. Great piece!!

___ 155. Peacock at the Fountain ruffled fruit bowl - purple - scarce

___ 156. Stippled Grape & Cable ruffled bowl w/ribbed back - green - pretty

___ 157. Butterfly & Berry hatpin holder - marigold - a great example, hard to find

___ 158. Suns Up hatpin - lavender

___ 159. Dimples & Brilliance hatpin - dark AND Rooster hatpin - teal

___ 160. M'burg Hanging Cherries 7 pc. water set - marigold - super hard set to find, 3 tumblers have chips on base

___ 161. Vintage 3 in 1 edge 9" ruffled bowl - red - scarce shape





___ 162. Blackberry Spray ruffled hat - green - pretty

___ 163. Blackberry Spray ruffled hat - amber

___ 164. Six Sided candlesticks - purple - super pretty & quite rare!

___ 165. Grape & Cable sweetmeat - marigold - tough color to find, nice!

___ 166. Grape & Cable sweetmeat - purple

___ 167. M'burg Wild Rose 10.5" lamp - green - very rare lamp, nice, has 6.3/8" base



___ 168. M'burg Wild Rose 9.5" lamp - amethyst - nice, scarce, 6" base

___ 169. Dragon & Lotus ICS bowl - red - scarce in this shape, nice



___ 170. N's Ivy Town Pump - green - rare color, plus very nice!

___ 171. N's Ivy Town Pump - marigold - another scarce color, nice!

___ 172. N's Ivy Town Pump - purple - nice example

___ 173. Fruits & Flowers 6 pc ruffled berry set - marigold

___ 174. Grape & Cable covered compote - purple

___ 175. Harvest Flower 7 pc. water set - marigold - very hard set to find

___ 176. Peacocks 9" plate w/ribbed back - ice blue - dark color, nice

___ 177. Peacocks 9" plate w/plain back - white - pretty

___ 178. Grape & Cable shot glass - purple - tiny pinpoint on base

___ 179. Grape & Cable 10 pc. small size punch set - white - pretty set!

___ 180. Grape & Cable 8 pc. small size punch set - green - very nice

___ 181. Grape & Cable 7 pc. small size punch set - purple - nice



___ 182. Stippled Grape & Cable PCE bowl w/ribbed back - aqua opal- pretty, butterscotch irid.

___ 183. Thistle CRE bowl - amethyst

___ 184. Strawberry Scroll water pitcher - blue - scarce

___ 185. Lot of 4 Strawberry Scroll tumblers - blue - very nice

___ 186. Rose Spray JIP stemmed compote - ice blue

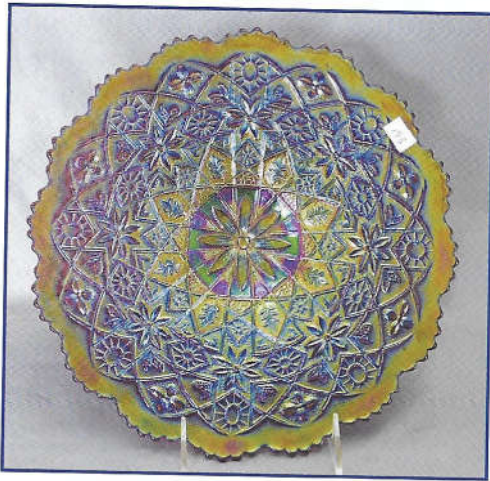


___ 187. Peter Rabbit ruffled bowl - marigold - scarce & always desirable

___ 188. Stippled Rays ICS sauce - red - wow, super!! ruffled bowl - ice green - very pretty, scarce

___ 190. Poppy Show ruffled bowl - ice blue - \ pretty, scarce

___ 191. Scroll Embossed miniature compote - purple - pretty



___ 192. Dugan Cherries ruffled bowl - peach opal

___ 193. Hattie chop plate - purple - fantastic quality, hard to find this beautiful

___ 204. Peacocks ruffled bowl w/ribbed back - aqua opal - pastel & super!!
___ 205. Peacocks ruffled w/ribbed back - aqua opal - butterscotch, nice
___ 206. Fenton Three Fruits 12 sided plate - green
___ 207. Holly ruffled compote - red - nice



___ 208. 1911 Atlantic City Elks bell - blue - super nice novelty, pretty

___ 209. Stippled Good Luck PCE bowl w/ribbed back - marigold - pastel, nice

___ 194. Two Flowers large deep ruffled bowl - marigold

___ 195. Plaid ruffled bowl - red - rare bowl!



___ 196. Fruits & Flowers bonbon - ice green - scarce, nice

___ 210. M'burg Hobstar & Feather giant rose bowl - green - one of the best ones we've ever seen, OUTSTANDING!

___ 197. Fruits & Flowers bonbon - ice blue - scarce, nice
___ 198. Fruits & Flowers bonbon - aqua opal - butterscotch
___ 199. Fruits & Flowers bonbon - marigold
___ 200. M'burg Marilyn 7 pc. water set - amethyst - scarce, small nick in pattern filled with epoxy
___ 201. Golden Harvest 5 pc. wine set - marigold
___ 202. Vintage 9" ruffled bowl - red - scarce, very nice!



___ 203. Inverted Strawberry small compote - blue - rare color to find in this pattern, pretty



___ 211. Little Flowers tri-cornered sauce - amethyst
___ 212. Pair of Little Flowers round sauces - one blue, one green - selling as a pair
___ 213. Diamond Lace 7 pc. water set - purple - pretty

- ___ 214. Basketweave Open Edge ruffled basket - black amethyst
- ___ 215. Basketweave Open Edge ruffled basket - blue

___ 216. Fruit Salad 8 pc. punch set - peach opal - very rare set, super nice, one punch cup has chip on the base



- ___ 217. N's Bushel Basket - smoke - pretty
- ___ 218. N's Bushel Basket - horehound - nice
- ___ 219. N's Bushel Basket - ice green
- ___ 220. N's Bushel Basket - aqua opal - butterscotch
- ___ 221. N's Bushel Basket - blue
- ___ 222. N's Bushel Basket - marigold
- ___ 223. Holly ICS bowl - red - rare in this shape, nice!
- ___ 224. Wishbone epergne - marigold - scarce item
- ___ 225. Holly 9" plate - black amethyst - scarce color



- ___ 226. Christmas compote - marigold - **OUTSTANDING example, very pretty piece of glass**
- ___ 227. Cherry Circles round bonbon - red - very rare bonbon, small spot of epoxy on edge
- ___ 228. Acorn Burrs 7 pc. water set - green - nice
- ___ 229. Acorn Burrs 5 pc. water set - purple - pretty set



___ 230. **Cosmos & Cane spittoon shape - marigold - very scarce and nice**

___ 231. Holly ruffled bowl - red - pretty example

- ___ 232. Stippled Peacocks ruffled bowl w/ribbed back - blue - electric and nice!
- ___ 233. Ribbed Spiral 9.5" vase - green opal w/light marigold overlay - very unusual vase



___ 234. **Heavy Web chop plate - peach opal - these are quite rare & very desirable**

___ 235. **Corn vase w/ stalk base - sapphire - rare color, nice**

___ 236. Corn vase w/ plain base - marigold - dark, super

___ 237. Corn Vase w/ plain base - green - pretty

___ 238. Corn vase w/ stalk base - purple

___ 239. Corn vase w/ stalk base - ice green - outstanding, might be the best ice green we've seen

___ 240. Corn vase w/ stalk base - white - very nice

___ 241. Lustre Rose ruffled fruit bowl - red - very scarce and nice!

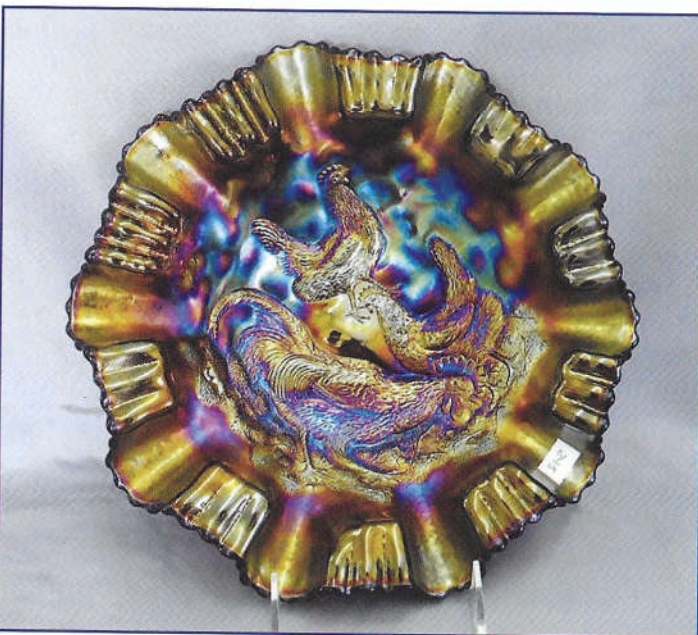


___ 242. Omnibus 7 pc. water set - marigold - pitcher is very rare

___ 243. M'burg Trout & Fly ICS bowl - lavender - satin & super, fish is beautiful!



___ 244. Panther 7 pc. berry set - marigold - bowl is ruffled and saucers are round



___ 245. Farmyard 3 in 1 edge bowl - purple - a collector's favorite!

___ 246. Orange Tree loving cup - marigold - dark, nice

___ 247. Basketweave Open Edge 8" plate - red - flash irid., rare with irid.



___ 248. Embroidered Mums ruffled bowl w/ribbed back - aqua opal - lots of opal and RARE!

___ 249. Pair of M'burg Blackberry Wreath 3 in 1 saucers - amethyst - radium, pinpoint on edge of one



___ 250. M'burg Cleveland Memorial ashtray - amethyst - very rare & nice, minor spot of repair on bottom edge

___ 251. Pulled Loops 10" vase - blue

___ 252. Grape & Cable cracker jar - white - scarce color, nice

___ 253. Singing Birds 7 pc. water set - green - pitcher is beautiful!!!



___ 254. Peacock Tail 7" ruffled bowl - red - cherry red color, has polishing on edge, still very pretty!

___ 255. Many Fruits 9 pc. punch set - purple - scarce set, minor pinpoint on edge of bowl

___ 256. Vintage fernery - red - scarce color, nice

___ 257. Diamond Rib 19.5" funeral vase - marigold - pretty from top to bottom, RARE

___ 258. Fenton Grape & Cable ftd ruffled bowl - blue

___ 259. Stork & Rushes 7 pc. water set - blue - one tumbler has a nick

___ 260. Embroidered Mums 9" plate w/ribbed back - lime green - scarce plate, nice

- ___ 261. Lot of 6 Singing Birds mugs - blue - one has damage



- ___ 262. Wishbone & Spades chop plate - peach opal - rare & nice!

- ___ 263. Lot of 4 Wild Strawberry sauces - purple

- ___ 264. Rose Show ruffled bowl - aqua opal - nice

- ___ 265. Butterfly & Berry 7 pc. berry set - marigold - master is ruffled, sauces are round

- ___ 266. Fluffy Peacock 7 pc. water set - amethyst - has crack on top of handle on body of pitcher, has manufacturing straw mark on lip of pitcher



- ___ 267. Memphis 8 pc. punch set - white - rare set, nice!

- ___ 268. Lot of 4 Ripple vases - marigold - all 4 have 3" bases

- ___ 269. Coin Dot 7" ruffled bowl - red - cherry red color and irid., nice

- ___ 270. Rising Sun water pitcher - blue - hard to find color

- ___ 271. Leaf Columns 12" vase - ice blue - scarce color

- ___ 272. Fine Cut & Roses rose bowl - purple

- ___ 273. Stippled Grape & Cable bonbon - aqua opal - tiny nick on edge

- ___ 274. Blackberry Spray square shaped hat - green



- ___ 275. M'burg Nesting Swan ruffled bowl - vaseline - this is not your normal vaseline Nesting Swan bowl, this one is INCREDIBLE!

- ___ 276. Garland rose bowl - marigold - pretty

- ___ 277. Panther footed ruffled sauce - red - nice, scarce

- ___ 278. Enameled Cherry & Little Flowers 7 pc. water set - blue

- ___ 279. Lot of 9 Grape & Cable sherbets - 5 purple & 4 marigold - two purple have damage

- ___ 280. Grape & Cable 6 pc. water set - purple

- ___ 281. Four Pillars vase - aqua opal

- ___ 282. Four Pillars vase - purple



- ___ 283. Stippled Grape & Cable 9 pc. punch set - blue - pretty and scarce set

- ___ 284. Stippled Grape & Cable 8 pc. punch set - marigold - another scarce set

- ___ 285. Lot of 3 vases - Miniature Morning Glory has damage

- ___ 286. Rose Show 9" plate - marigold

- ___ 287. Wishbone 7 pc. water set - green - rare set

___ 288. Kittens
cup/saucer - blue
- rare color, nice



___ 289. Enameled
Magnolia 7
pc. water set -
marigold

___ 290. M'burg
Four Pillars 10.5"
vase - amethyst

___ 291. Dahlia 7 pc. water set - purple - scarce set

___ 292. Pair of Coin Spot ruffled compotes - marigold

___ 293. Acorn 7" ruffled bowl - red

___ 294. Butterfly & Berry 7 pc. water set - marigold



___ 295. M'burg
Perfection tumbler -
amethyst - scarce

___ 296. Lot of 4 marigold
vases

___ 297. Peacock at the
Fountain 5 pc. water set
- blue

___ 298. Dragon & Lotus
ruffled bowl - red - scarce,
nice

___ 299. M'burg Ohio
Star vase - amethyst -
super pretty, has one of
those tiny pinpoints on
edge of the base, no big
deal

___ 302. N's Peacock at Urn master ICS bowl - aqua
opal - Super pretty!
Extremely rare! Great
piece!



___ 303. N's Peacock at
Urn ICS sauce - aqua opal
- this is also super! has
light butterscotch irid.

___ 300. Four Seventy Four
punch cup - emerald green
- pretty!

___ 305. S-Repeat punch cup - purple - nice

___ 300.
Chatelaine
water pitcher
- purple -
super pretty!
collectors
favorite!



___ 301.
Chatelaine
tumbler
- purple -
pretty!

___ 306. Lot of 2 vases - not Carnival glass

___ 307. Lot of 5 vases - marigold and peach opal

___ 308. Lot of 2 pieces - amethyst - bonbon has nick

___ 309. Lot of 7 tumblers - various colors - all damaged
except blue Peacock at the Fountain and
marigold Grape & Cable

___ 310. Lot of 4 pieces - marigold

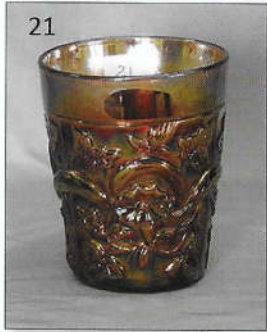
___ 311. Lot of 2 pieces - toothpick has minor nicks

___ 312. Lot of 2 pieces

___ 313. Lot of 2 pieces - Poinsettia & Lattice has
chipped point

___ 314. Robin 7 pc. water set - white - marked IG

___ 315. Diving Dolphins candlesticks - purple



**2023 Carnival
Glass Auction**
Sat., April 15, 9:30 a.m.
Embassy Suites Airport Hotel
Kansas City, Missouri

Seeck Auctions
Jim & Jan Seeck
641-424-1116

**W MATTHEW WRODA
AUCTIONS**
937-548-7835

